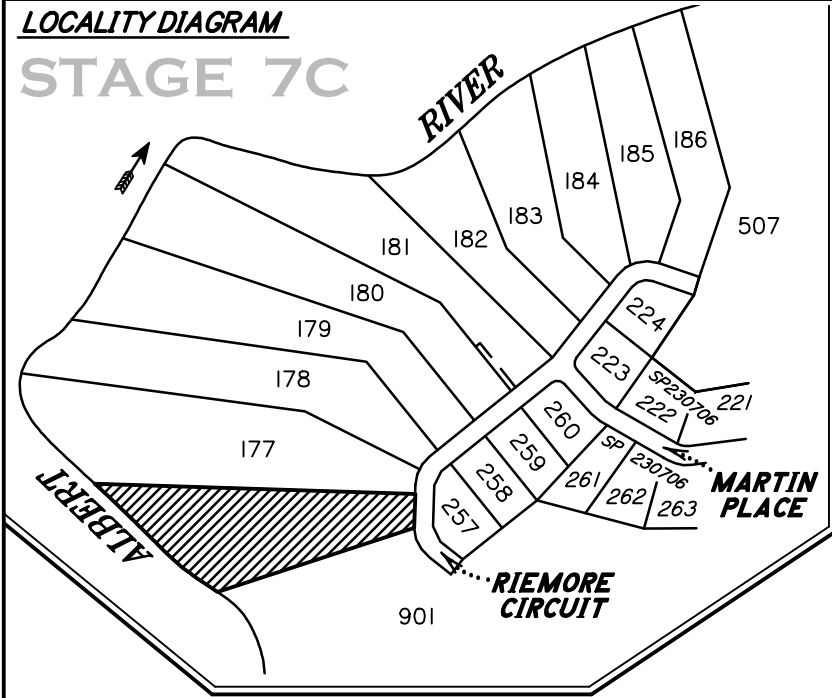


**LOCALITY DIAGRAM**

**STAGE 7C**



**LEGEND**

- s— SEWER
- s— SEWER HOUSE CONNECTION
- SEWER MANHOLE
- SW— STORMWATER
- STORMWATER MANHOLE
- RW— ROOFWATER
- W— WATER
- ☒ WATER SERVICE
- W—] WATER END CAP
- C— WATER CONDUIT
- [H] FIRE HYDRANT
- UE— UNDERGROUND ELECTRICITY
- [E] ELECTRICAL PILLAR
- T— TELECOMMUNICATIONS
- [T] TELECOMMUNICATIONS PIT
- ☼ STREET LIGHT
- =— KERB & CHANNEL
- - - ROAD CENTRELINE
- - - FOOTPATH
- - - BUILDING ENVELOPE
- =— DRIVEWAY
- - - CONTOURS DESIGN
- - - CONTOURS

**DISCLOSURE PLAN**

**For Lot 176 (on SP230708)  
RIEMORE CIRCUIT  
TAMBORINE -RIEMORE- (Stage 7C)  
QLD**

Described as Part of Lot 9 on SP227072,  
Lot 506 on SP230704 and Lot 708 on SP230706.

Parish of TAMBORINE, County of Ward.  
Local Authority: SCENIC RIM R.C.

MAP REF: 9542-42322

**NOTES:**

Areas and Dimensions are subject to plan registration.  
Proposed surface information is derived from digital  
data provided by REF:

**AUTHORISATION:**

Neville Henry VOLKER Date:  
Cadastral Surveyor: N H Volker & Co Pty Ltd

<b>DATE</b> 07/07/2015	<b>SURVEYED</b> NHV
<b>SCALE</b> 1 : 2500 (A4)	<b>DRAWN</b> BD15170
<b>LEVEL DATUM</b> A.H.D	<b>CHECKED</b> NHV

**N H Volker & Co Pty Ltd**  
Consulting Surveyors  
Land Development Consultants

PO Box 411, Beenleigh 4207  
Phone: (07) 5543 8489  
e-mail: nvolker@bigpond.net.au

**DWG NO: RIEMORE-ST7C-DP 176**

Proposed Lot

177

91°50'

312.0

**176**

2.2 ha

205.0

252°0'

Proposed Lot

901

**RIEMORE  
CIRCUIT**

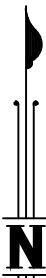
36.0

181°50'

**ALBERT**

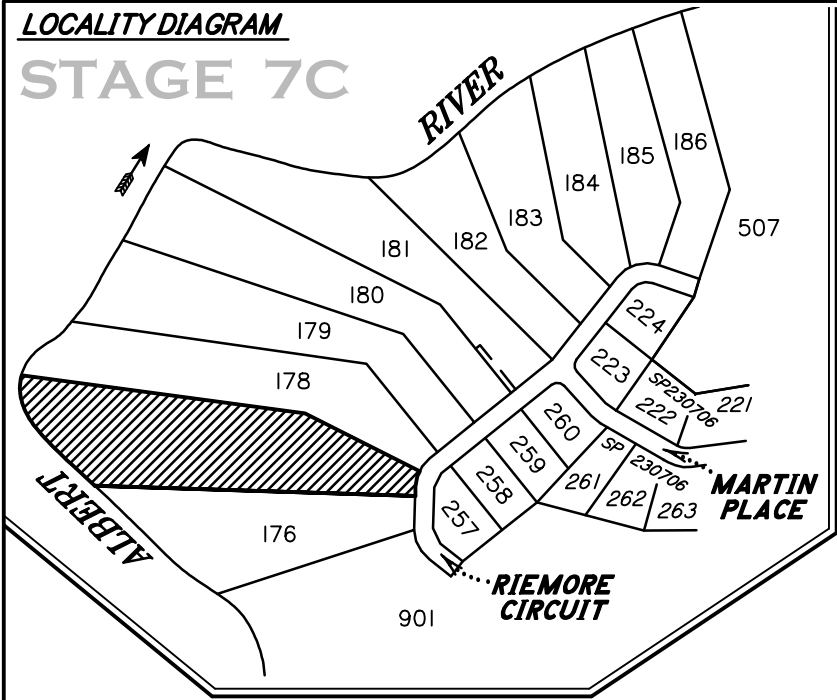
**RIVER**

Scale 1 : 2500 (at A4) (NB: using "Fit to Paper" option when printing may distort scale)



**LOCALITY DIAGRAM**

**STAGE 7C**



**LEGEND**

- |      |                        |      |                         |
|------|------------------------|------|-------------------------|
| —S—  | SEWER                  | —UE— | UNDERGROUND ELECTRICITY |
| —S—  | SEWER HOUSE CONNECTION | [E]  | ELECTRICAL PILLAR       |
| ●    | SEWER MANHOLE          | —T—  | TELECOMMUNICATIONS      |
| —SW— | STORMWATER             | [T]  | TELECOMMUNICATIONS PIT  |
| ○    | STORMWATER MANHOLE     | ☼    | STREET LIGHT            |
| —    | STORMWATER GULLYTRAP   | —    | KERB & CHANNEL          |
| —RW— | ROOFWATER              | —    | ROAD CENTRELINE         |
| —W—  | WATER                  | —    | FOOTPATH                |
| ☒    | WATER SERVICE          | —    | BUILDING ENVELOPE       |
| —W—  | WATER END CAP          | —    | DRIVEWAY                |
| —C—  | WATER CONDUIT          | —    | CONTOURS DESIGN         |
| [H]  | FIRE HYDRANT           | —    | CONTOURS                |

**DISCLOSURE PLAN**

**For Lot 177 (on SP230708)  
RIEMORE CIRCUIT  
TAMBORINE -RIEMORE- (Stage 7C)  
QLD**

Described as Part of Lot 9 on SP227072,  
Lot 506 on SP230704 and Lot 708 on SP230706.

Parish of TAMBORINE, County of Ward.  
Local Authority: SCENIC RIM R.C.

MAP REF: 9542-42322

**NOTES:**

Areas and Dimensions are subject to plan registration.  
Proposed surface information is derived from digital  
data provided by REF:

**AUTHORISATION:**

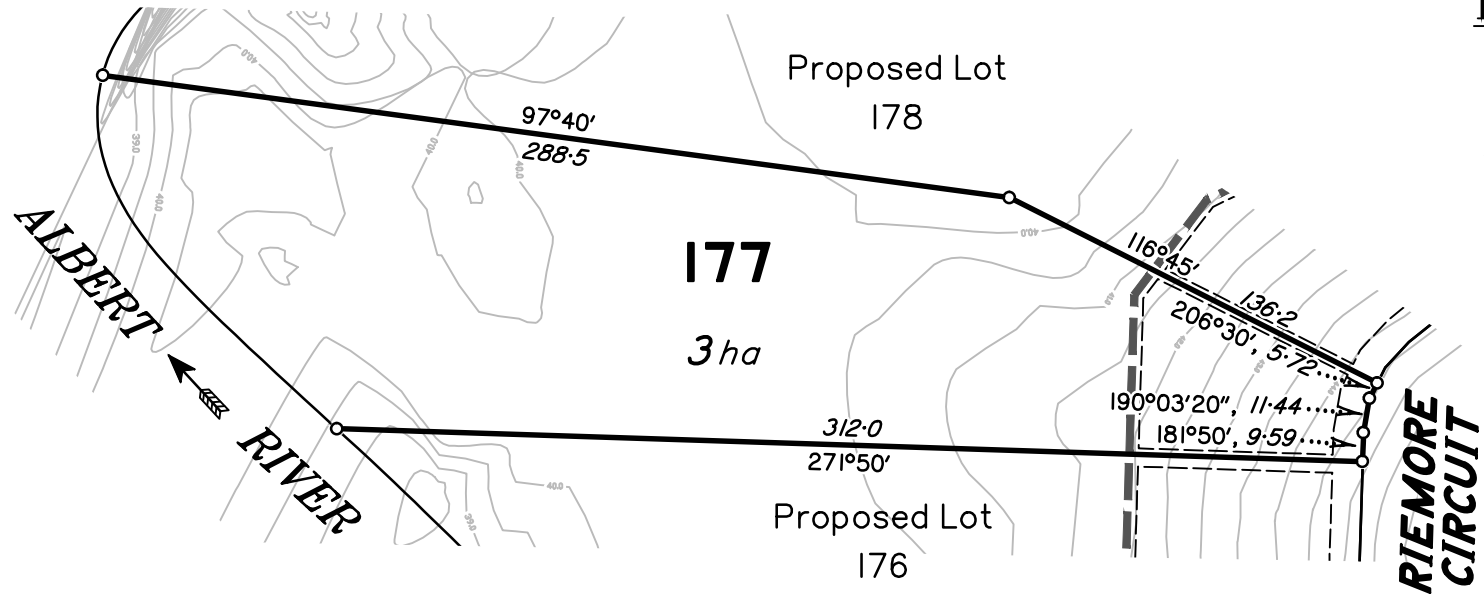
Neville Henry VOLKER Date:  
Cadastral Surveyor: N H Volker & Co Pty Ltd

<b>DATE</b> 07/07/2015	<b>SURVEYED</b> NHV
<b>SCALE</b> 1 : 2500 (A4)	<b>DRAWN</b> BD15170
<b>LEVEL DATUM</b> A.H.D	<b>CHECKED</b> NHV

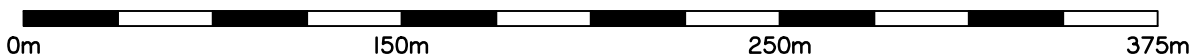
**N H Volker & Co Pty Ltd**  
Consulting Surveyors  
Land Development Consultants

PO Box 411, Beenleigh 4207  
Phone: (07) 5543 8489  
e-mail: nvolker@bigpond.net.au

**DWG NO: RIEMORE-ST7C-DP 177**

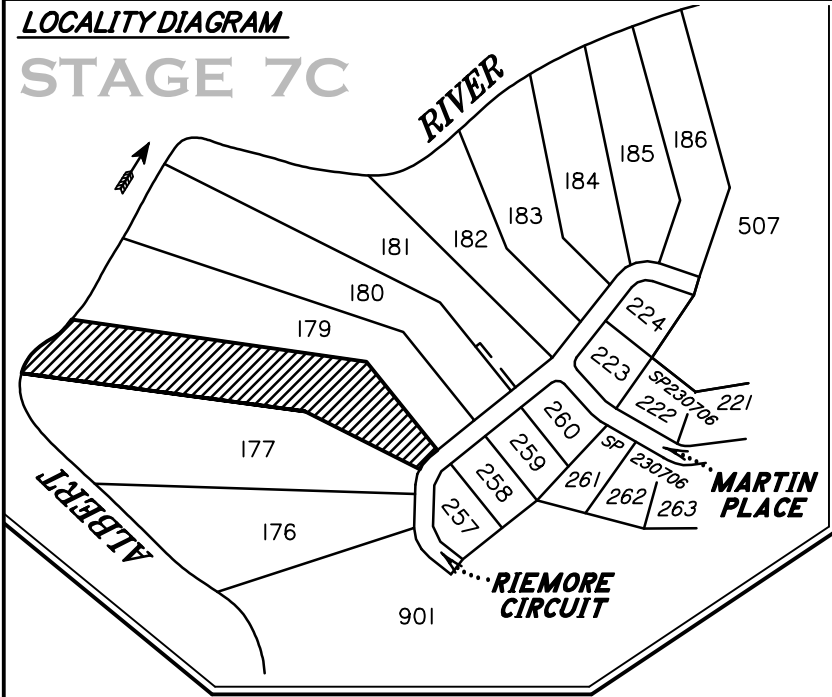


Scale 1 : 2500 (at A4) (NB: using "Fit to Paper" option when printing may distort scale)



**LOCALITY DIAGRAM**

**STAGE 7C**



**LEGEND**

- |      |                        |      |                         |
|------|------------------------|------|-------------------------|
| —S—  | SEWER                  | —UE— | UNDERGROUND ELECTRICITY |
| —S—  | SEWER HOUSE CONNECTION | [E]  | ELECTRICAL PILLAR       |
| ●    | SEWER MANHOLE          | —T—  | TELECOMMUNICATIONS      |
| —SW— | STORMWATER             | [T]  | TELECOMMUNICATIONS PIT  |
| ○    | STORMWATER MANHOLE     | ☼    | STREET LIGHT            |
| —    | STORMWATER GULLYTRAP   | —    | KERB & CHANNEL          |
| —RW— | ROOFWATER              | —    | ROAD CENTRELINE         |
| —W—  | WATER                  | —    | FOOTPATH                |
| ☒    | WATER SERVICE          | —    | BUILDING ENVELOPE       |
| —W—  | WATER END CAP          | —    | DRIVEWAY                |
| —C—  | WATER CONDUIT          | —    | CONTOURS DESIGN         |
| [H]  | FIRE HYDRANT           | —    | CONTOURS                |

**DISCLOSURE PLAN**

**For Lot 178 (on SP230708)  
RIEMORE CIRCUIT  
TAMBORINE -RIEMORE- (Stage 7C)  
QLD**

Described as Part of Lot 9 on SP227072,  
Lot 506 on SP230704 and Lot 708 on SP230706.

Parish of TAMBORINE, County of Ward.  
Local Authority: SCENIC RIM R.C.

MAP REF: 9542-42322

**NOTES:**

Areas and Dimensions are subject to plan registration.  
Proposed surface information is derived from digital  
data provided by REF:

**AUTHORISATION:**

Neville Henry VOLKER Date:  
Cadastral Surveyor: N H Volker & Co Pty Ltd

<b>DATE</b> 07/07/2015	<b>SURVEYED</b> NHV
<b>SCALE</b> 1 : 2500 (A4)	<b>DRAWN</b> BD15170
<b>LEVEL DATUM</b> A.H.D	<b>CHECKED</b> NHV

**N H Volker & Co Pty Ltd**  
Consulting Surveyors  
Land Development Consultants

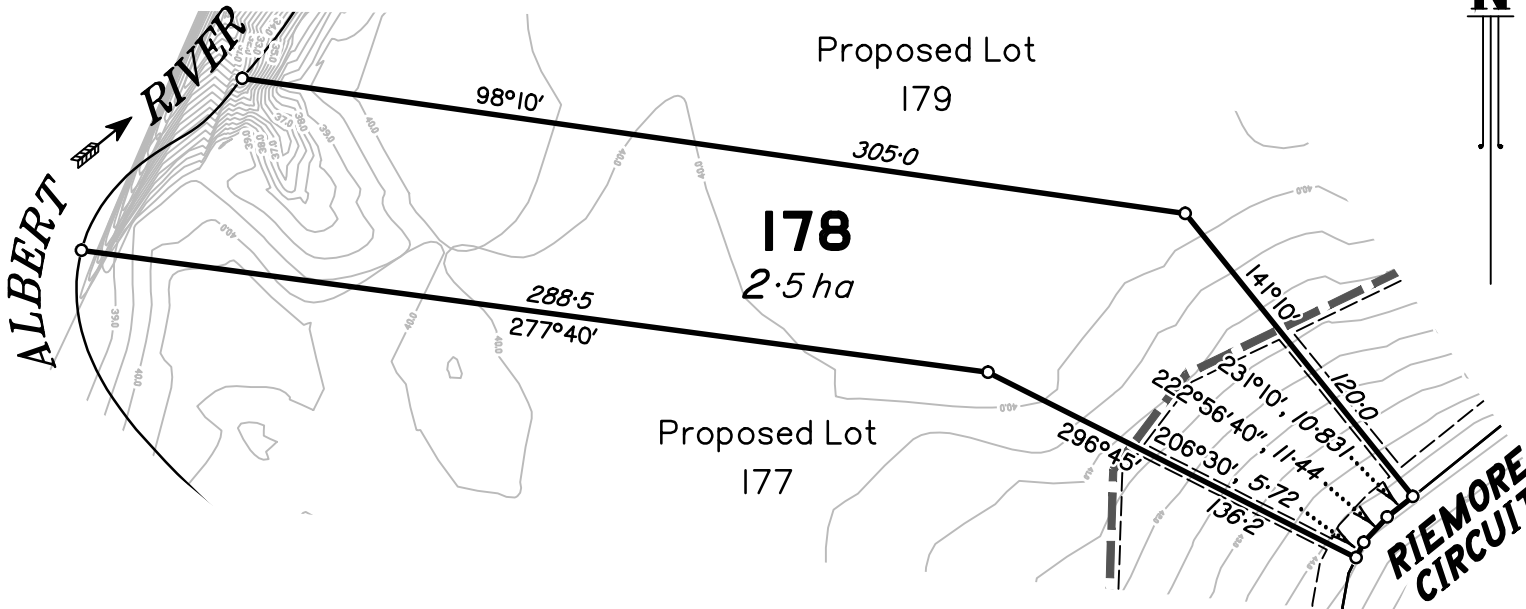
PO Box 411, Beenleigh 4207  
Phone: (07) 5543 8489  
e-mail: nvolker@bigpond.net.au

**DWG NO: RIEMORE-ST7C-DP 178**

Proposed Lot  
179

**178**  
2.5 ha

Proposed Lot  
177



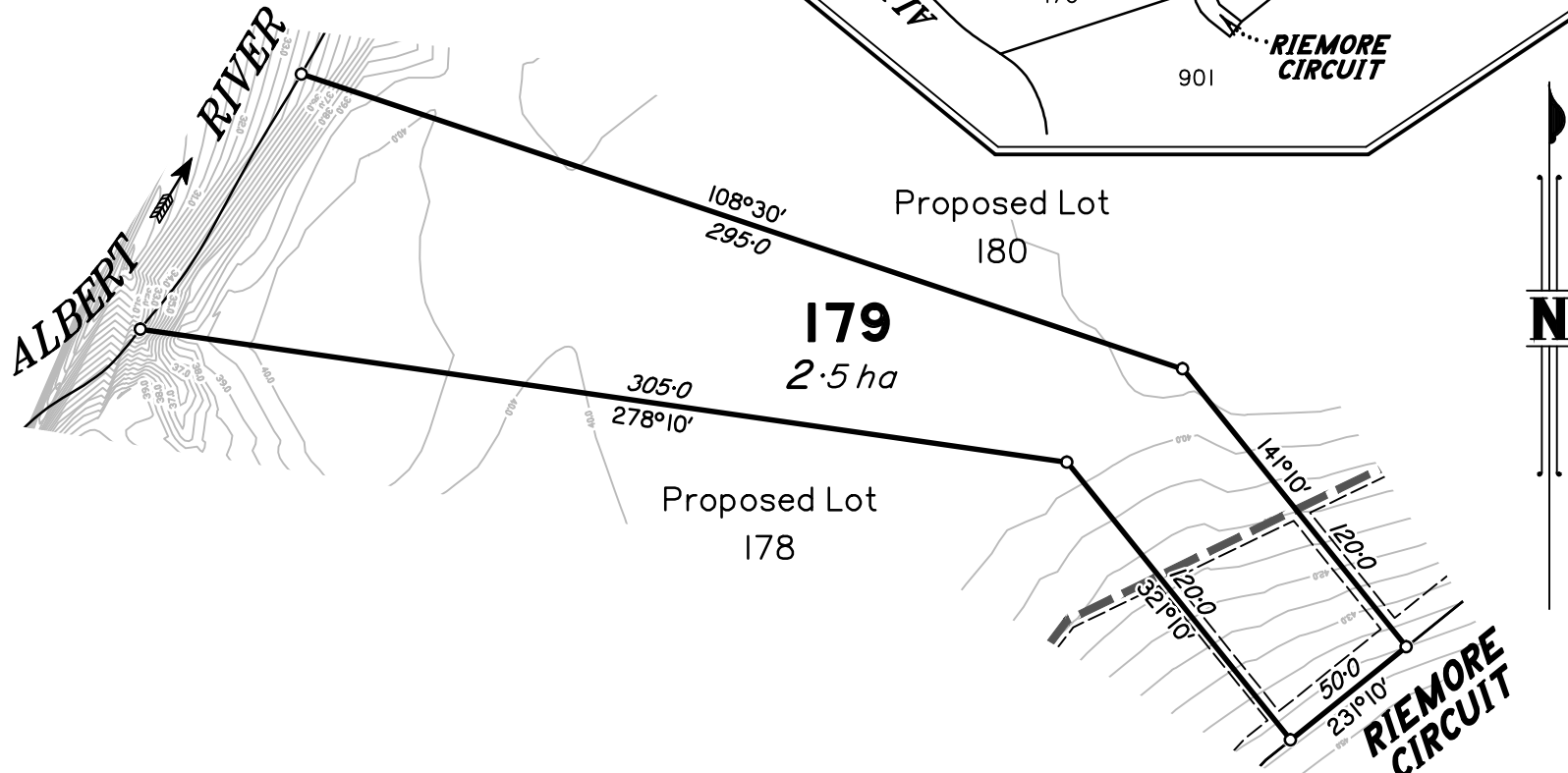
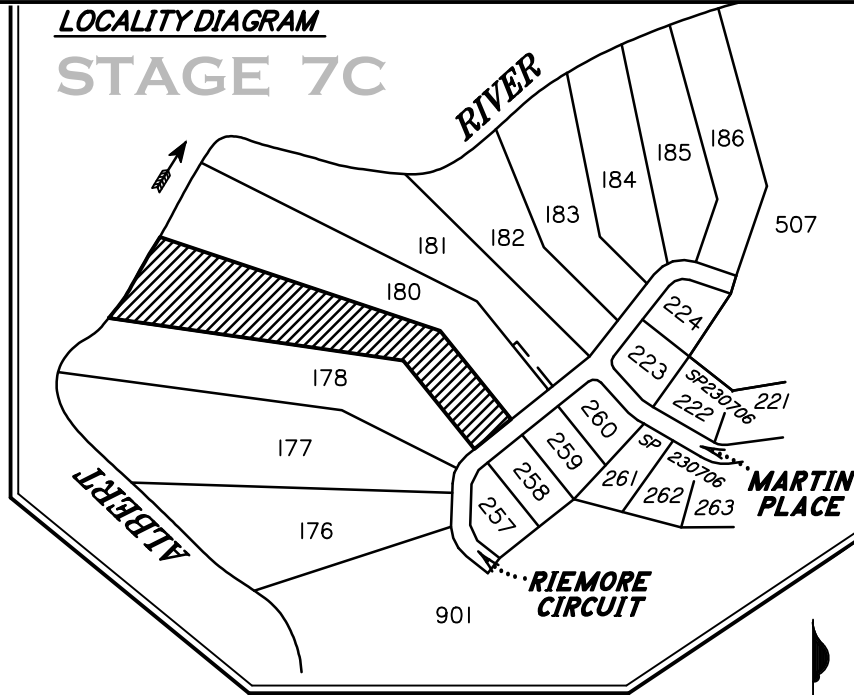
Scale 1 : 2500 (at A4) (NB: using "Fit to Paper" option when printing may distort scale)



**LEGEND**

- |      |                        |      |                         |
|------|------------------------|------|-------------------------|
| —S—  | SEWER                  | —UE— | FLOODLINE               |
| —S—  | SEWER HOUSE CONNECTION | [E]  | UNDERGROUND ELECTRICITY |
| ●    | SEWER MANHOLE          | [T]  | ELECTRICAL PILLAR       |
| —SW— | STORMWATER             | —T—  | TELECOMMUNICATIONS      |
| ○    | STORMWATER MANHOLE     | [ ]  | TELECOMMUNICATIONS PIT  |
| —    | STORMWATER GULLYTRAP   | ●*   | STREET LIGHT            |
| —RW— | ROOFWATER              | —    | KERB & CHANNEL          |
| —W—  | WATER                  | —    | ROAD CENTRELINE         |
| ⊠    | WATER SERVICE          | —    | FOOTPATH                |
| —W—  | WATER END CAP          | —    | BUILDING ENVELOPE       |
| —C—  | WATER CONDUIT          | —    | DRIVEWAY                |
| [H]  | FIRE HYDRANT           | —    | CONTOURS DESIGN         |
|      |                        | —    | CONTOURS                |

**LOCALITY DIAGRAM**



Scale 1:2500 (at A4) (NB: using "Fit to Paper" option when printing may distort scale)



**DISCLOSURE PLAN**

For Lot **179** (on SP230708)  
**RIEMORE CIRCUIT**  
**TAMBORINE -RIEMORE- (Stage 7C)**  
**QLD**

Described as Part of Lot 9 on SP227072,  
 Lot 506 on SP230704 and Lot 708 on SP230706.

Parish of TAMBORINE, County of Ward.  
 Local Authority: SCENIC RIM R.C.

MAP REF: 9542-42322

**NOTES:**

Areas and Dimensions are subject to plan registration.  
 Proposed surface information is derived from digital data provided by REF:

**AUTHORISATION:**

Neville Henry VOLKER Date:  
 Cadastral Surveyor: N H Volker & Co Pty Ltd

<b>DATE</b> 07/07/2015	<b>SURVEYED</b> NHV
<b>SCALE</b> 1:2500 (A4)	<b>DRAWN</b> BD15170
<b>LEVEL DATUM</b> A.H.D	<b>CHECKED</b> NHV

**N H Volker & Co Pty Ltd**  
 Consulting Surveyors  
 Land Development Consultants

PO Box 411, Beenleigh 4207  
 Phone: (07) 5543 8489  
 e-mail: nvolker@bigpond.net.au

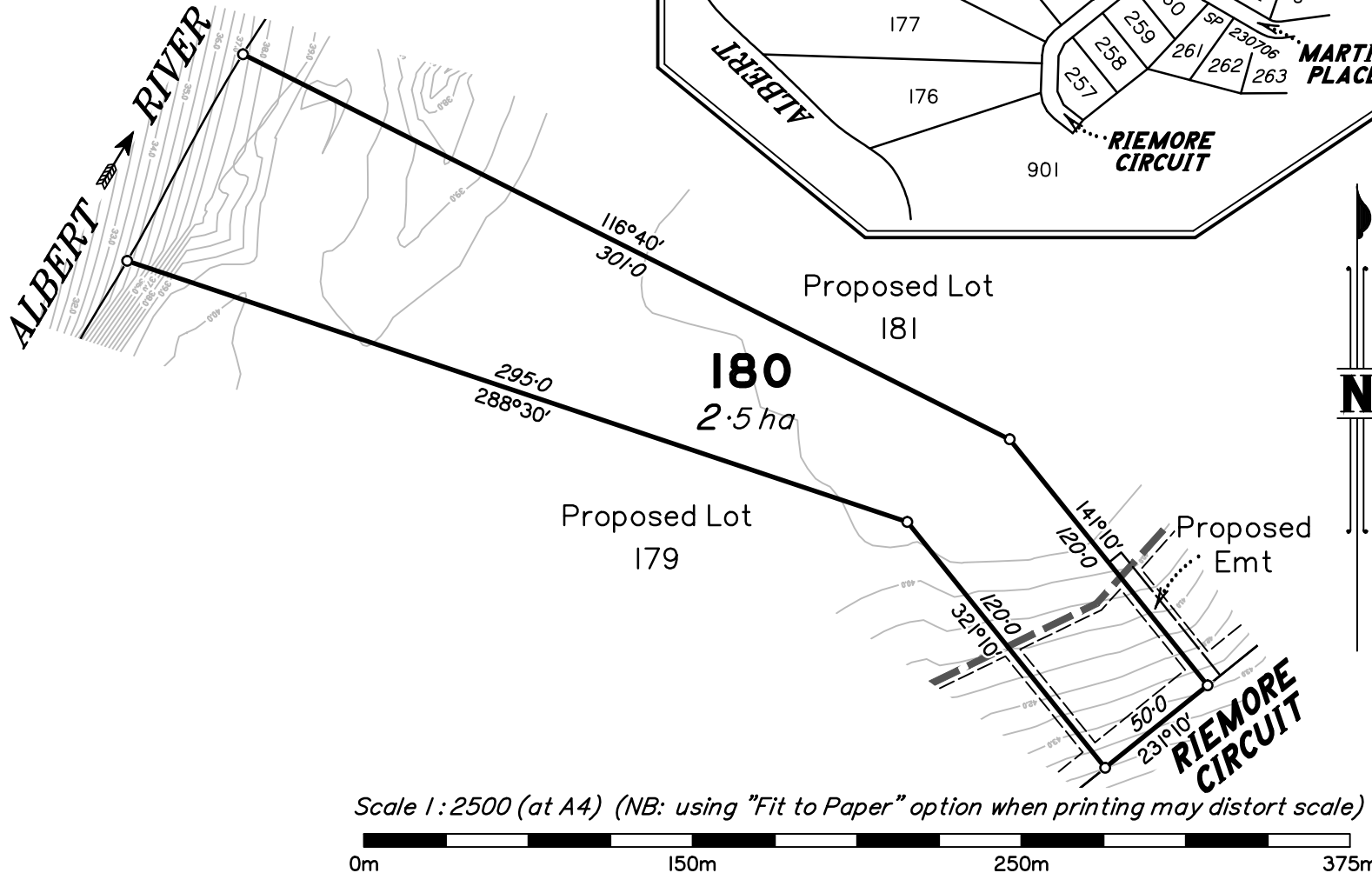
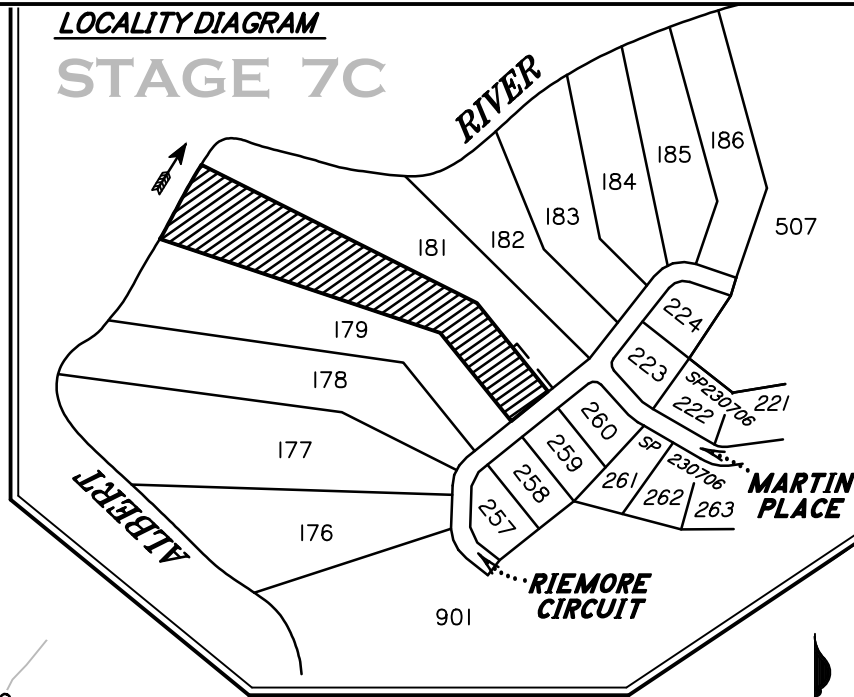
**DWG NO: RIEMORE-ST7C-DP 179**

**LEGEND**

- |      |                        |      |                         |
|------|------------------------|------|-------------------------|
| —S—  | SEWER                  | —UE— | FLOODLINE               |
| —S—  | SEWER HOUSE CONNECTION | [E]  | UNDERGROUND ELECTRICITY |
| ●    | SEWER MANHOLE          | [T]  | ELECTRICAL PILLAR       |
| —SW— | STORMWATER             | —T—  | TELECOMMUNICATIONS      |
| ○    | STORMWATER MANHOLE     | [ ]  | TELECOMMUNICATIONS PIT  |
| —    | STORMWATER GULLYTRAP   | ⊙    | STREET LIGHT            |
| —RW— | ROOFWATER              | —    | KERB & CHANNEL          |
| —W—  | WATER                  | —    | ROAD CENTRELINE         |
| ⊠    | WATER SERVICE          | —    | FOOTPATH                |
| —W—  | WATER END CAP          | —    | BUILDING ENVELOPE       |
| —C—  | WATER CONDUIT          | —    | DRIVEWAY                |
| [H]  | FIRE HYDRANT           | —    | CONTOURS DESIGN         |
|      |                        | —    | CONTOURS                |

**LOCALITY DIAGRAM**

**STAGE 7C**



Scale 1:2500 (at A4) (NB: using "Fit to Paper" option when printing may distort scale)

**DISCLOSURE PLAN**

For Lot **180** (on SP230708)  
**RIEMORE CIRCUIT**  
**TAMBORINE -RIEMORE- (Stage 7C)**  
**QLD**

Described as Part of Lot 9 on SP227072,  
 Lot 506 on SP230704 and Lot 708 on SP230706.

Parish of TAMBORINE, County of Ward.  
 Local Authority: SCENIC RIM R.C.

MAP REF: 9542-42322

**NOTES:**

Areas and Dimensions are subject to plan registration.  
 Proposed surface information is derived from digital data provided by REF:

**AUTHORISATION:**

Neville Henry VOLKER Date:  
 Cadastral Surveyor: N H Volker & Co Pty Ltd

<b>DATE</b> 07/07/2015	<b>SURVEYED</b> NHV
<b>SCALE</b> 1:2500 (A4)	<b>DRAWN</b> BD15170
<b>LEVEL DATUM</b> A.H.D	<b>CHECKED</b> NHV

N H Volker & Co Pty Ltd  
 Consulting Surveyors  
 Land Development Consultants

PO Box 411, Beenleigh 4207  
 Phone: (07) 5543 8489  
 e-mail: nvolker@bigpond.net.au

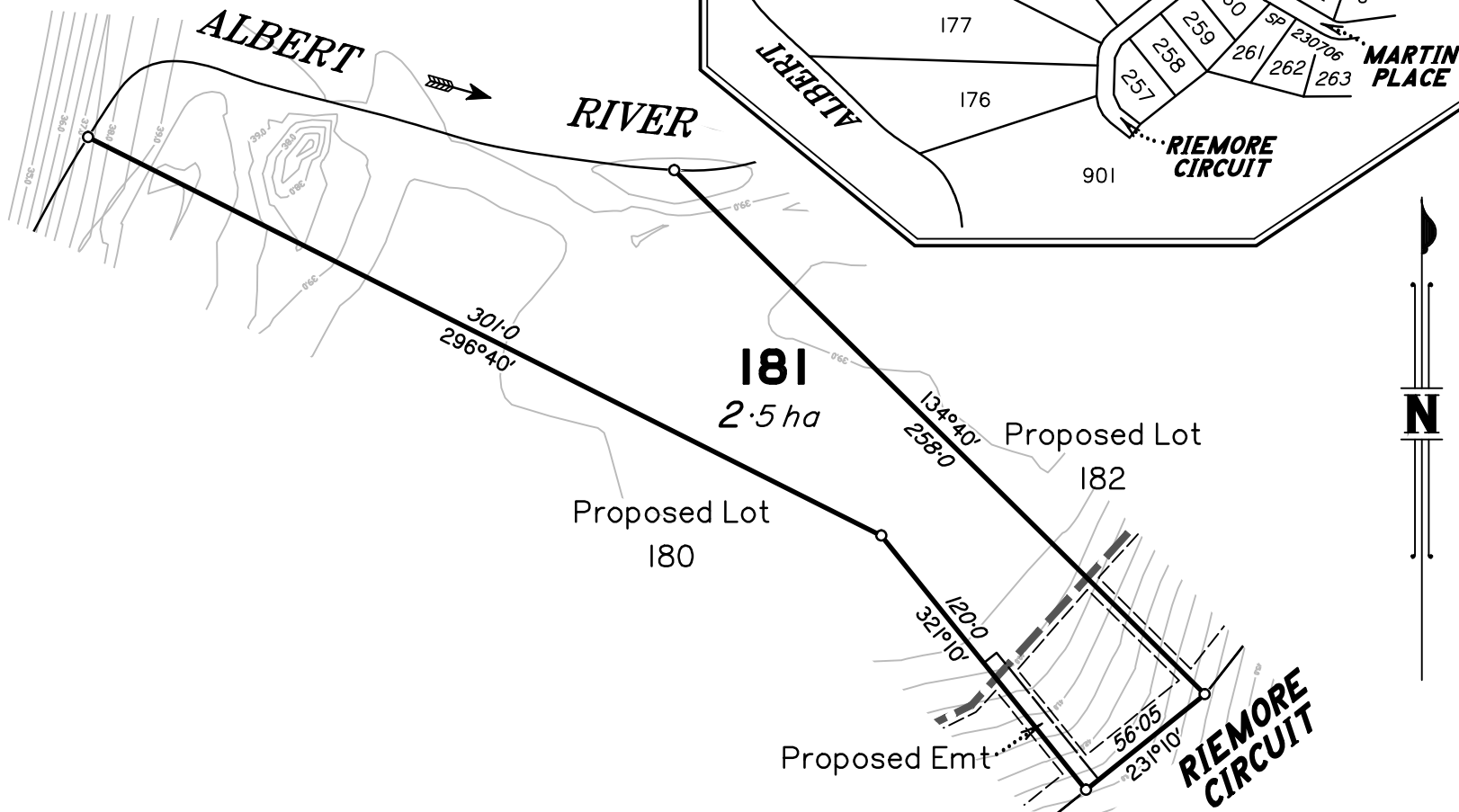
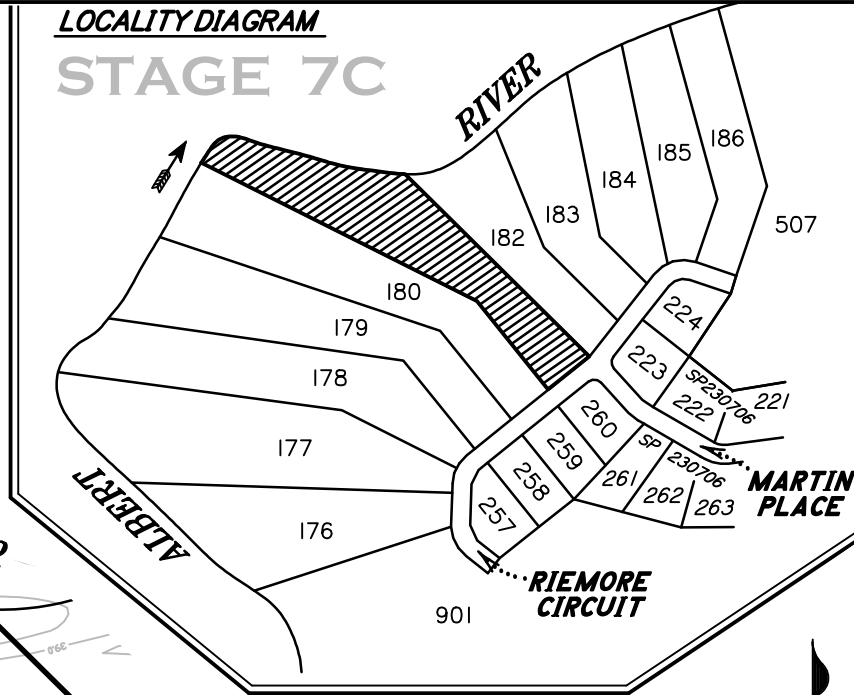
**DWG NO: RIEMORE-ST7C-DP 180**

**LEGEND**

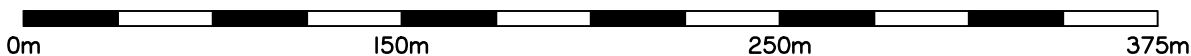
- |      |                        |      |                         |
|------|------------------------|------|-------------------------|
| —S—  | SEWER                  | —F—  | FLOODLINE               |
| —S—  | SEWER HOUSE CONNECTION | —UE— | UNDERGROUND ELECTRICITY |
| ●    | SEWER MANHOLE          | [E]  | ELECTRICAL PILLAR       |
| —SW— | STORMWATER             | —T—  | TELECOMMUNICATIONS      |
| ○    | STORMWATER MANHOLE     | [T]  | TELECOMMUNICATIONS PIT  |
| —    | STORMWATER GULLYTRAP   | ●*   | STREET LIGHT            |
| —RW— | ROOFWATER              | —    | KERB & CHANNEL          |
| —W—  | WATER                  | —    | ROAD CENTRELINE         |
| ⊠    | WATER SERVICE          | —    | FOOTPATH                |
| —W—  | WATER END CAP          | —    | BUILDING ENVELOPE       |
| —C—  | WATER CONDUIT          | —    | DRIVEWAY                |
| [H]  | FIRE HYDRANT           | —    | CONTOURS DESIGN         |
|      |                        | —    | CONTOURS                |

**LOCALITY DIAGRAM**

**STAGE 7C**



Scale 1:2500 (at A4) (NB: using "Fit to Paper" option when printing may distort scale)



**DISCLOSURE PLAN**

For Lot **181** (on SP230708)  
**RIEMORE CIRCUIT**  
**TAMBORINE -RIEMORE- (Stage 7C)**  
**QLD**

Described as Part of Lot 9 on SP227072,  
 Lot 506 on SP230704 and Lot 708 on SP230706.

Parish of TAMBORINE, County of Ward.  
 Local Authority: SCENIC RIM R.C.

MAP REF: 9542-42322

**NOTES:**

Areas and Dimensions are subject to plan registration.  
 Proposed surface information is derived from digital  
 data provided by REF:

**AUTHORISATION:**

Neville Henry VOLKER Date:  
 Cadastral Surveyor: N H Volker & Co Pty Ltd

<b>DATE</b> 07/07/2015	<b>SURVEYED</b> NHV
<b>SCALE</b> 1:2500 (A4)	<b>DRAWN</b> BD15170
<b>LEVEL DATUM</b> A.H.D	<b>CHECKED</b> NHV

N H Volker & Co Pty Ltd  
 Consulting Surveyors  
 Land Development Consultants

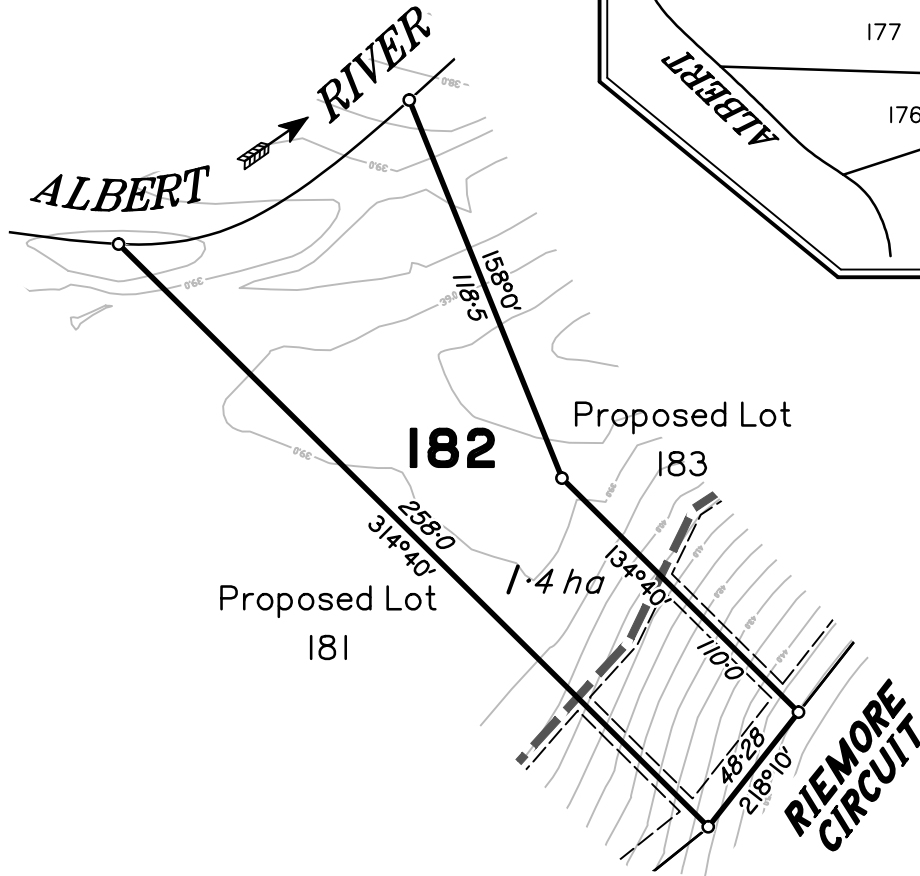
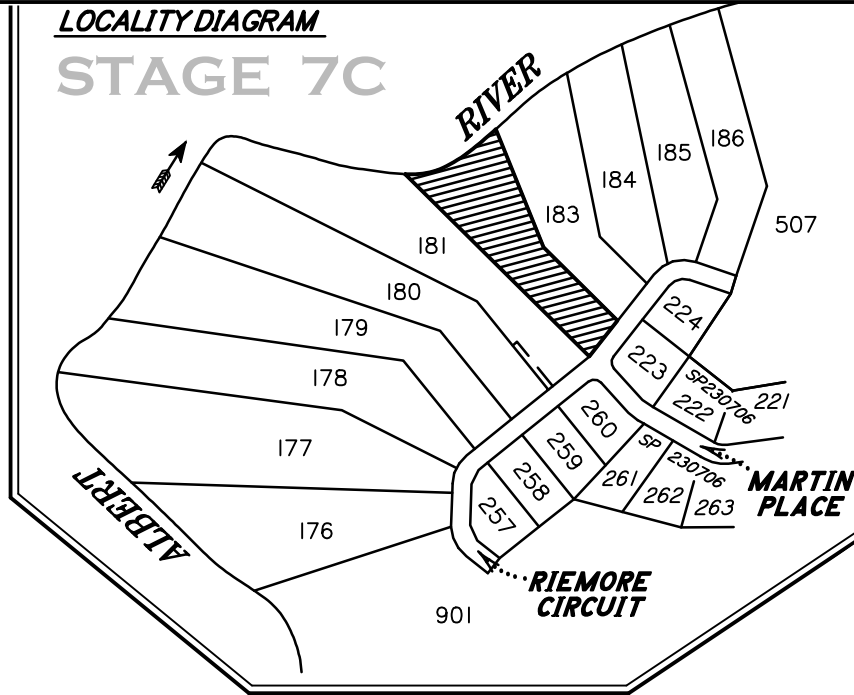
PO Box 411, Beenleigh 4207  
 Phone: (07) 5543 8489  
 e-mail: nvolker@bigpond.net.au

**DWG NO: RIEMORE-ST7C-DP 181**

**LEGEND**

- |      |                        |      |                         |
|------|------------------------|------|-------------------------|
| —S—  | SEWER                  | —■—  | FLOODLINE               |
| —S—  | SEWER HOUSE CONNECTION | —UE— | UNDERGROUND ELECTRICITY |
| ●    | SEWER MANHOLE          | [E]  | ELECTRICAL PILLAR       |
| —SW— | STORMWATER             | —T—  | TELECOMMUNICATIONS      |
| ○    | STORMWATER MANHOLE     | [T]  | TELECOMMUNICATIONS PIT  |
| —    | STORMWATER GULLYTRAP   | ●*   | STREET LIGHT            |
| —RW— | ROOFWATER              | —    | KERB & CHANNEL          |
| —W—  | WATER                  | —    | ROAD CENTRELINE         |
| ⊠    | WATER SERVICE          | —    | FOOTPATH                |
| —W—  | WATER END CAP          | —    | BUILDING ENVELOPE       |
| —C—  | WATER CONDUIT          | —    | DRIVEWAY                |
| [H]  | FIRE HYDRANT           | —    | CONTOURS DESIGN         |
|      |                        | —    | CONTOURS                |

**LOCALITY DIAGRAM**



Scale 1 : 2500 (at A4) (NB: using "Fit to Paper" option when printing may distort scale)



**DISCLOSURE PLAN**

For Lot **182** (on SP230708)  
**RIEMORE CIRCUIT**  
**TAMBORINE -RIEMORE- (Stage 7C)**  
**QLD**

Described as Part of Lot 9 on SP227072,  
 Lot 506 on SP230704 and Lot 708 on SP230706.

Parish of TAMBORINE, County of Ward.  
 Local Authority: SCENIC RIM R.C.

MAP REF: 9542-42322

**NOTES:**

Areas and Dimensions are subject to plan registration.  
 Proposed surface information is derived from digital data provided by REF:

**AUTHORISATION:**

Neville Henry VOLKER Date:  
 Cadastral Surveyor: N H Volker & Co Pty Ltd

<b>DATE</b> 07/07/2015	<b>SURVEYED</b> NHV
<b>SCALE</b> 1 : 2500 (A4)	<b>DRAWN</b> BD15170
<b>LEVEL DATUM</b> A.H.D	<b>CHECKED</b> NHV

**N H Volker & Co Pty Ltd**  
 Consulting Surveyors  
 Land Development Consultants

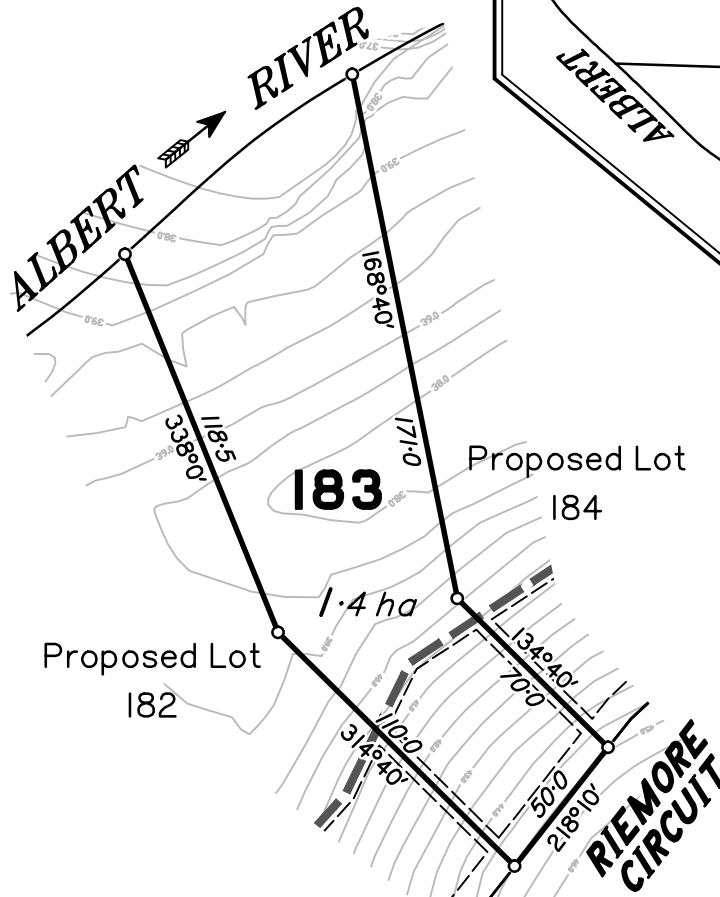
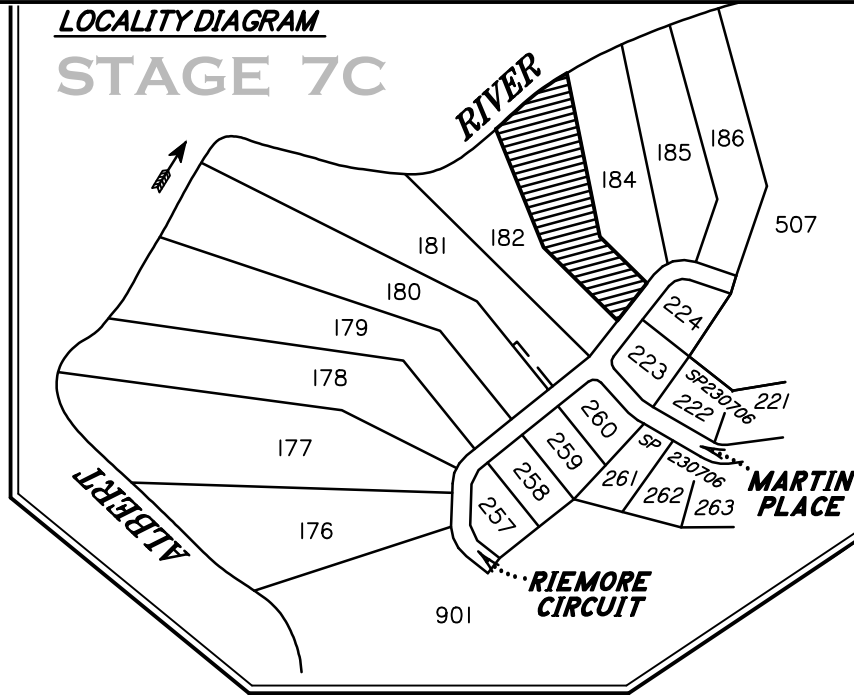
PO Box 411, Beenleigh 4207  
 Phone: (07) 5543 8489  
 e-mail: nvolker@bigpond.net.au

**DWG NO: RIEMORE-ST7C-DP 182**

**LEGEND**

- |      |                        |      |                         |
|------|------------------------|------|-------------------------|
| —S—  | SEWER                  | —F—  | FLOODLINE               |
| —S—  | SEWER HOUSE CONNECTION | —UE— | UNDERGROUND ELECTRICITY |
| ●    | SEWER MANHOLE          | [E]  | ELECTRICAL PILLAR       |
| —SW— | STORMWATER             | —T—  | TELECOMMUNICATIONS      |
| ○    | STORMWATER MANHOLE     | [T]  | TELECOMMUNICATIONS PIT  |
| —    | STORMWATER GULLYTRAP   | ●*   | STREET LIGHT            |
| —RW— | ROOFWATER              | —    | KERB & CHANNEL          |
| —W—  | WATER                  | —    | ROAD CENTRELINE         |
| ⊠    | WATER SERVICE          | —    | FOOTPATH                |
| —W—  | WATER END CAP          | —    | BUILDING ENVELOPE       |
| —C—  | WATER CONDUIT          | —    | DRIVEWAY                |
| [H]  | FIRE HYDRANT           | —    | CONTOURS DESIGN         |
|      |                        | —    | CONTOURS                |

**LOCALITY DIAGRAM**



Scale 1 : 2500 (at A4) (NB: using "Fit to Paper" option when printing may distort scale)



**DISCLOSURE PLAN**

For Lot **183** (on SP230708)  
**RIEMORE CIRCUIT**  
**TAMBORINE -RIEMORE- (Stage 7C)**  
**QLD**

Described as Part of Lot 9 on SP227072,  
 Lot 506 on SP230704 and Lot 708 on SP230706.

Parish of TAMBORINE, County of Ward.  
 Local Authority: SCENIC RIM R.C.

MAP REF: 9542-42322

**NOTES:**

Areas and Dimensions are subject to plan registration.  
 Proposed surface information is derived from digital data provided by REF:

**AUTHORISATION:**

Neville Henry VOLKER Date:  
 Cadastral Surveyor: N H Volker & Co Pty Ltd

DATE 07/07/2015	SURVEYED NHV
SCALE 1 : 2500 (A4)	DRAWN BD15170
LEVEL DATUM A.H.D	CHECKED NHV

N H Volker & Co Pty Ltd  
 Consulting Surveyors  
 Land Development Consultants

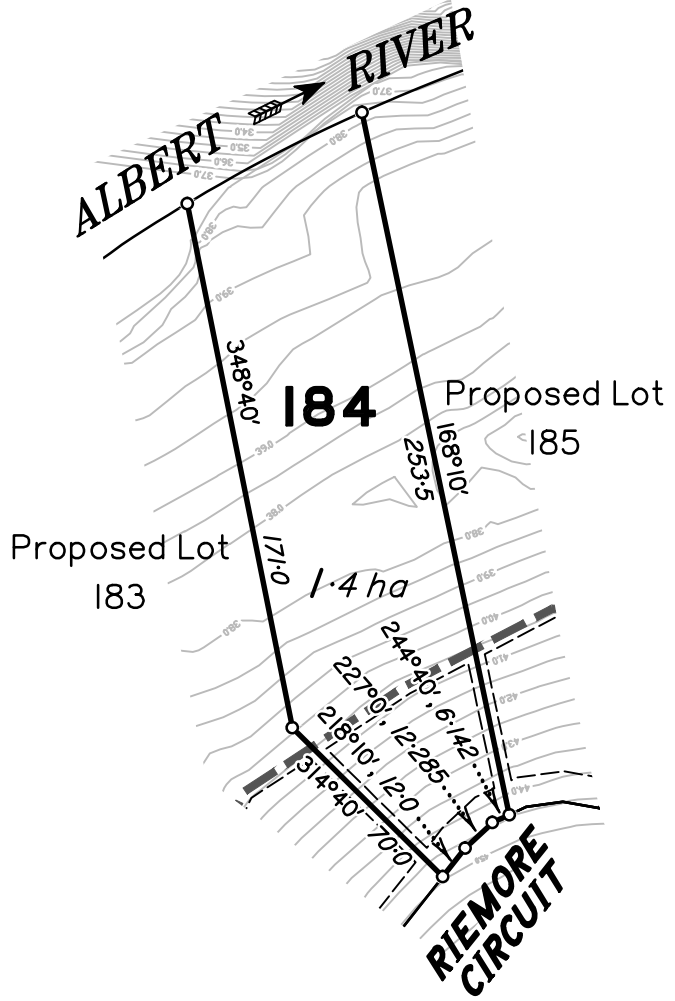
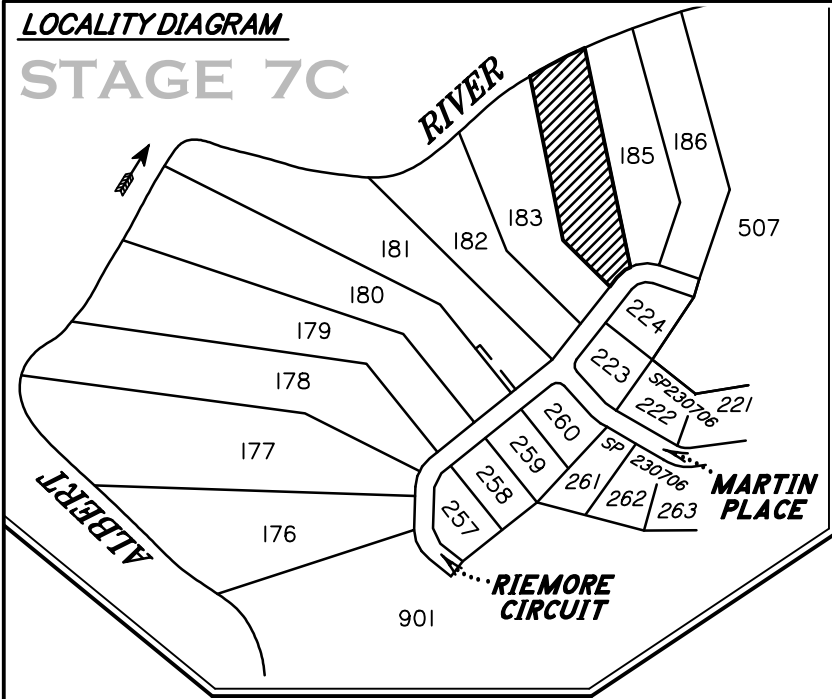
PO Box 411, Beenleigh 4207  
 Phone: (07) 5543 8489  
 e-mail: nvolker@bigpond.net.au

DWG NO: RIEMORE-ST7C-DP 183



**LOCALITY DIAGRAM**

**STAGE 7C**

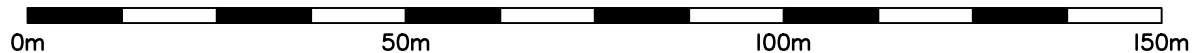


**LEGEND**

- s — SEWER
- s — SEWER HOUSE CONNECTION
- SEWER MANHOLE
- SW — STORMWATER
- STORMWATER MANHOLE
- SW — STORMWATER GULLYTRAP
- RW — ROOFWATER
- W — WATER
- ☒ WATER SERVICE
- W — ] WATER END CAP
- c — WATER CONDUIT
- ⊠ FIRE HYDRANT
- ▬ FLOODLINE
- UE — UNDERGROUND ELECTRICITY
- ⊠ ELECTRICAL PILLAR
- T — TELECOMMUNICATIONS
- ⊠ TELECOMMUNICATIONS PIT
- ⊙ STREET LIGHT
- ▬ KERB & CHANNEL
- ▬ ROAD CENTRELINE
- ▬ FOOTPATH
- ▬ BUILDING ENVELOPE
- ▬ DRIVEWAY
- ▬ CONTOURS DESIGN
- ▬ CONTOURS



Scale 1:1000 (at A4) (NB: using "Fit to Paper" option when printing may distort scale)



**DISCLOSURE PLAN**

**For Lot 184 (on SP230708)  
RIEMORE CIRCUIT  
TAMBORINE -RIEMORE- (Stage 7C)  
QLD**

Described as Part of Lot 9 on SP227072,  
Lot 506 on SP230704 and Lot 708 on SP230706.

Parish of TAMBORINE, County of Ward.  
Local Authority: SCENIC RIM R.C.

MAP REF: 9542-42322

**NOTES:**

Areas and Dimensions are subject to plan registration.  
Proposed surface information is derived from digital  
data provided by REF:

**AUTHORISATION:**

Neville Henry VOLKER Date:  
Cadastral Surveyor: N H Volker & Co Pty Ltd

<b>DATE</b> 07/07/2015	<b>SURVEYED</b> NHV
<b>SCALE</b> 1 : 2500 (A4)	<b>DRAWN</b> BD15170
<b>LEVEL DATUM</b> A.H.D	<b>CHECKED</b> NHV

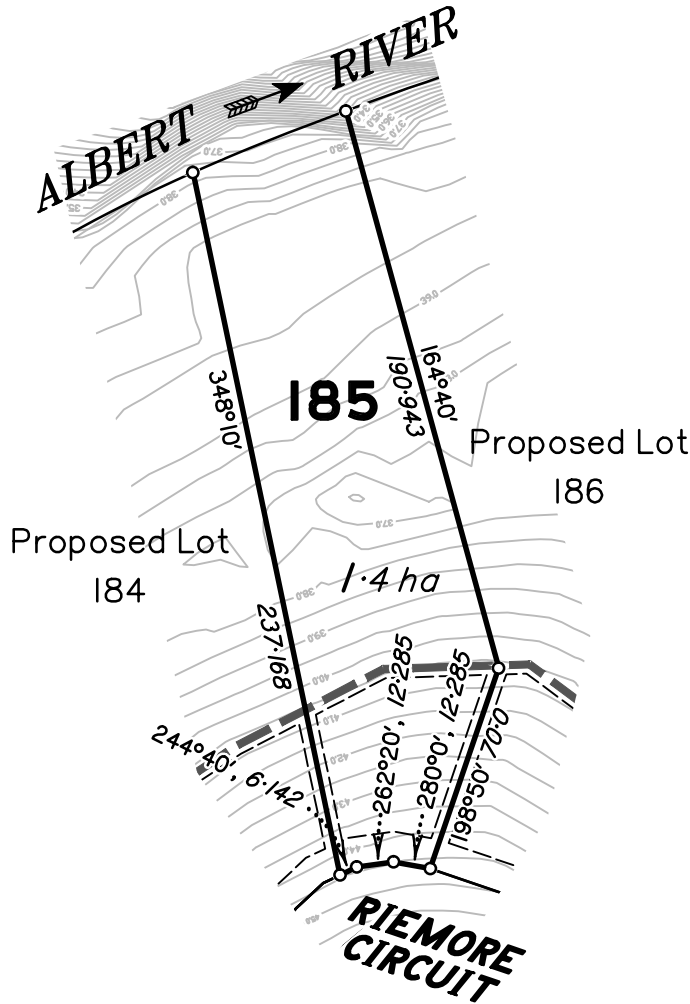
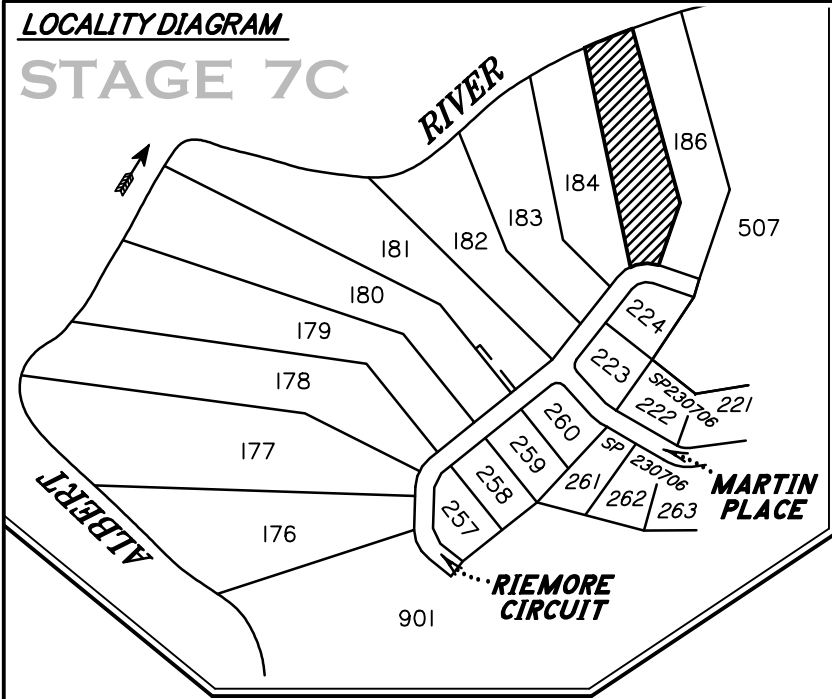
**N H Volker & Co Pty Ltd**  
Consulting Surveyors  
Land Development Consultants

PO Box 411, Beenleigh 4207  
Phone: (07) 5543 8489  
e-mail: nvolker@bigpond.net.au

**DWG NO: RIEMORE-ST7C-DP 184**

**LOCALITY DIAGRAM**

**STAGE 7C**



**LEGEND**

- s — SEWER
- s —┘ SEWER HOUSE CONNECTION
- SEWER MANHOLE
- SW — STORMWATER
- STORMWATER MANHOLE
- ┘ RW — ROOFWATER
- W — WATER
- ⊠ WATER SERVICE
- ┘ W — WATER END CAP
- C — WATER CONDUIT
- ⊠ FIRE HYDRANT
- ▬ FLOODLINE
- UE — UNDERGROUND ELECTRICITY
- ⊠ ELECTRICAL PILLAR
- T — TELECOMMUNICATIONS
- ⊠ TELECOMMUNICATIONS PIT
- \* STREET LIGHT
- ▬ KERB & CHANNEL
- ▬ ROAD CENTRELINE
- ▬ FOOTPATH
- ▬ BUILDING ENVELOPE
- ▬ DRIVEWAY
- ▬ CONTOURS DESIGN
- ▬ CONTOURS



Scale 1:1000 (at A4) (NB: using "Fit to Paper" option when printing may distort scale)



**DISCLOSURE PLAN**

For Lot **158** (on SP230708)  
**RIEMORE CIRCUIT**  
**TAMBORINE -RIEMORE-** (Stage 7C)  
**QLD**

Described as Part of Lot 9 on SP227072,  
 Lot 506 on SP230704 and Lot 708 on SP230706.

Parish of TAMBORINE, County of Ward.  
 Local Authority: SCENIC RIM R.C.

MAP REF: 9542-42322

**NOTES:**

Areas and Dimensions are subject to plan registration.  
 Proposed surface information is derived from digital  
 data provided by REF:

**AUTHORISATION:**

Neville Henry VOLKER Date:  
 Cadastral Surveyor: N H Volker & Co Pty Ltd

<b>DATE</b> 07/07/2015	<b>SURVEYED</b> NHV
<b>SCALE</b> 1 : 2500 (A4)	<b>DRAWN</b> BD15170
<b>LEVEL DATUM</b> A.H.D	<b>CHECKED</b> NHV

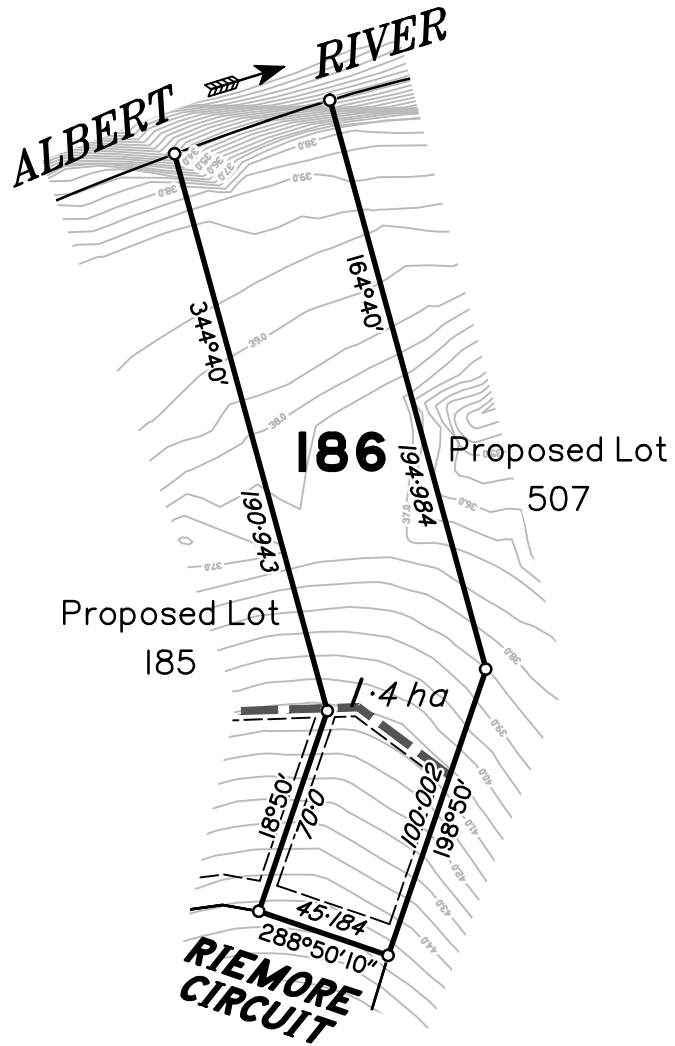
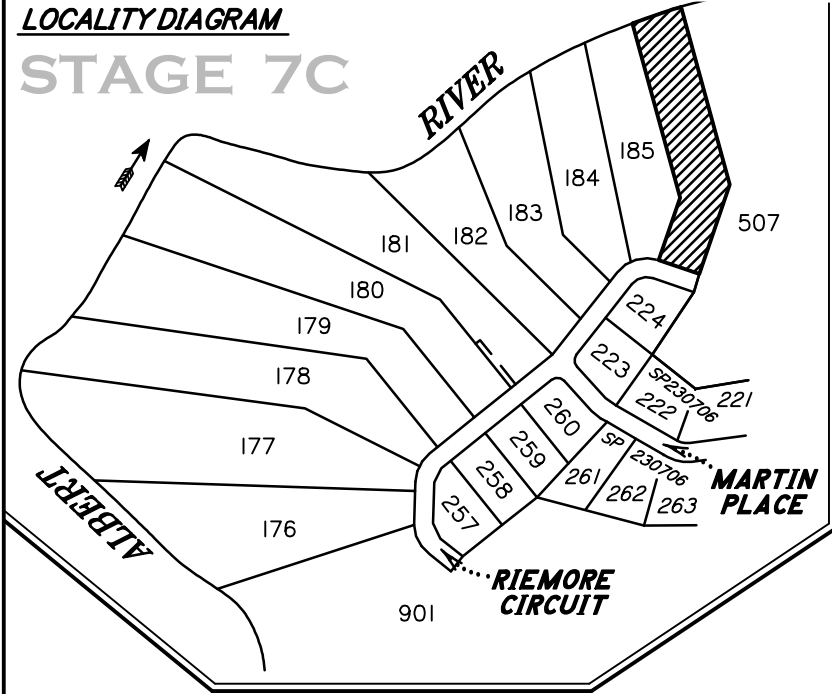
**N H Volker & Co Pty Ltd**  
**Consulting Surveyors**  
**Land Development Consultants**

PO Box 411, Beenleigh 4207  
 Phone: (07) 5543 8489  
 e-mail: nvolker@bigpond.net.au

**DWG NO: RIEMORE-ST7C-DP 185**

**LOCALITY DIAGRAM**

**STAGE 7C**

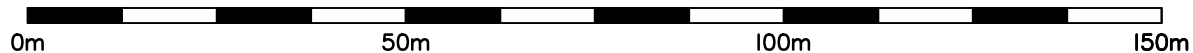


**LEGEND**

- s — SEWER
- s —┘ SEWER HOUSE CONNECTION
- SEWER MANHOLE
- SW — STORMWATER
- STORMWATER MANHOLE
- SW — STORMWATER GULLYTRAP
- RW — ROOFWATER
- W — WATER
- ⊠ WATER SERVICE
- W —┘ WATER END CAP
- C — WATER CONDUIT
- ⊠ FIRE HYDRANT
- ▬ FLOODLINE
- UE — UNDERGROUND ELECTRICITY
- ⊠ ELECTRICAL PILLAR
- T — TELECOMMUNICATIONS
- ⊠ TELECOMMUNICATIONS PIT
- \* STREET LIGHT
- ▬ KERB & CHANNEL
- ▬ ROAD CENTRELINE
- ▬ FOOTPATH
- ▬ BUILDING ENVELOPE
- ▬ DRIVEWAY
- ▬ CONTOURS DESIGN
- ▬ CONTOURS



Scale 1:1000 (at A4) (NB: using "Fit to Paper" option when printing may distort scale)



**DISCLOSURE PLAN**

For Lot **186** (on SP230708)  
**RIEMORE CIRCUIT**  
**TAMBORINE -RIEMORE-** (Stage 7C)  
**QLD**

Described as Part of Lot 9 on SP227072,  
 Lot 506 on SP230704 and Lot 708 on SP230706.

Parish of TAMBORINE, County of Ward.  
 Local Authority: SCENIC RIM R.C.

MAP REF: 9542-42322

**NOTES:**

Areas and Dimensions are subject to plan registration.  
 Proposed surface information is derived from digital  
 data provided by REF:

**AUTHORISATION:**

Neville Henry VOLKER Date:  
 Cadastral Surveyor: N H Volker & Co Pty Ltd

<b>DATE</b> 07/07/2015	<b>SURVEYED</b> NHV
<b>SCALE</b> 1 : 2500 (A4)	<b>DRAWN</b> BD15170
<b>LEVEL DATUM</b> A.H.D	<b>CHECKED</b> NHV

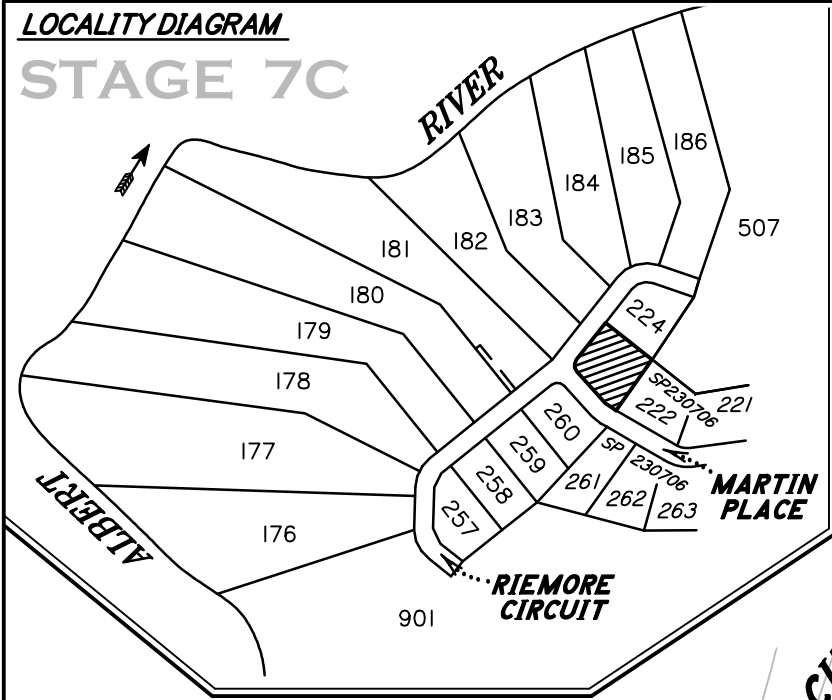
**N H Volker & Co Pty Ltd**  
**Consulting Surveyors**  
**Land Development Consultants**

PO Box 411, Beenleigh 4207  
 Phone: (07) 5543 8489  
 e-mail: nvolker@bigpond.net.au

**DWG NO: RIEMORE-ST7C-DP 186**

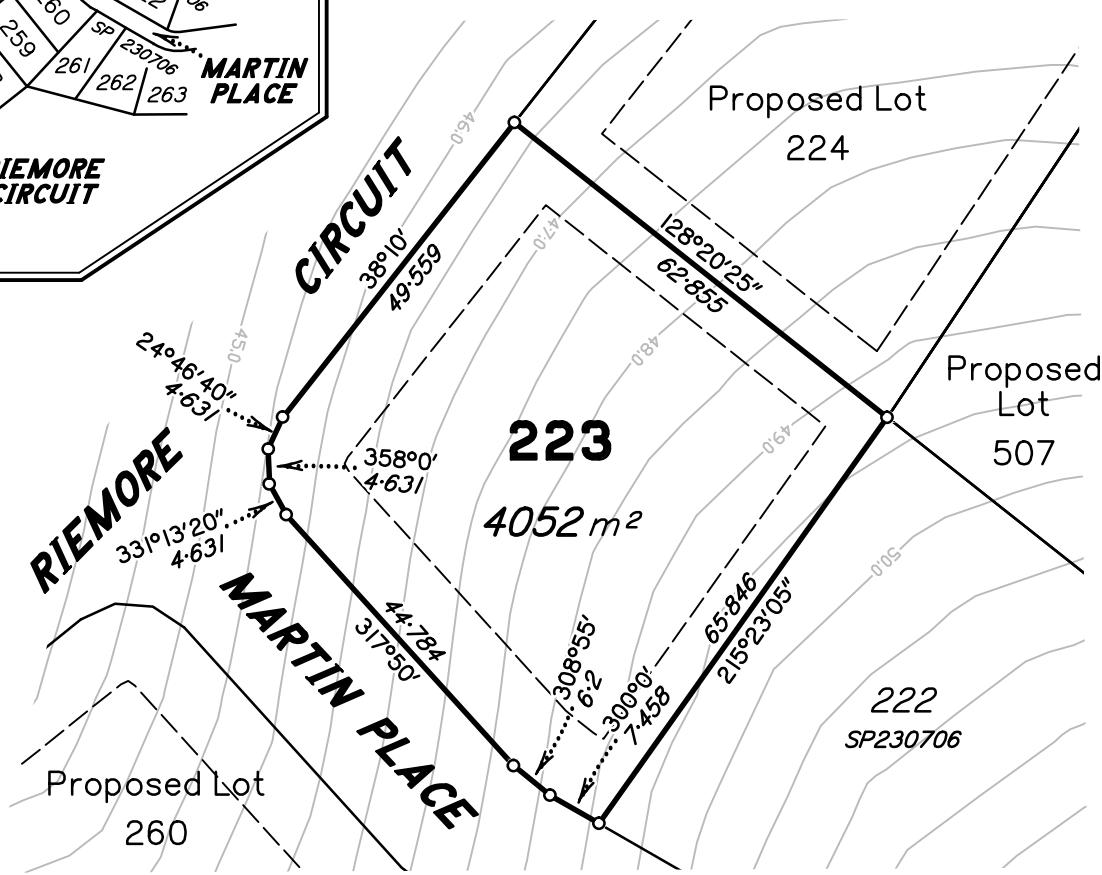
**LOCALITY DIAGRAM**

**STAGE 7C**



**LEGEND**

— s —	SEWER
— s —┘	SEWER HOUSE CONNECTION
●	SEWER MANHOLE
— SW —	STORMWATER
○	STORMWATER MANHOLE
—	STORMWATER GULLYTRAP
— RW —	ROOFWATER
— W —	WATER
⊠	WATER SERVICE
— W —┘	WATER END CAP
— C —	WATER CONDUIT
⊠	FIRE HYDRANT
—	FLOODLINE
— UE —	UNDERGROUND ELECTRICITY
⊠	ELECTRICAL PILLAR
— T —	TELECOMMUNICATIONS
⊠	TELECOMMUNICATIONS PIT
⊙	STREET LIGHT
—	KERB & CHANNEL
—	ROAD CENTRELINE
—	FOOTPATH
—	BUILDING ENVELOPE
—	DRIVEWAY
—	CONTOURS DESIGN
—	CONTOURS



Scale 1:1000 (at A4) (NB: using "Fit to Paper" option when printing may distort scale)

0m 50m 100m 150m

**DISCLOSURE PLAN**

For Lot **223** (on SP230708)  
**RIEMORE CIRCUIT and  
 MARTIN PLACE  
 TAMBORINE -RIEMORE- (Stage 7C)  
 QLD**  
 Described as Part of Lot 9 on SP227072,  
 Lot 506 on SP230704 and Lot 708 on SP230706.

Parish of TAMBORINE, County of Ward.  
 Local Authority: SCENIC RIM R.C.

MAP REF: 9542-42322

**NOTES:**  
 Areas and Dimensions are subject to plan registration.  
 Proposed surface information is derived from digital  
 data provided by REF:

**AUTHORISATION:**

Neville Henry VOLKER Date:  
 Cadastral Surveyor: N H Volker & Co Pty Ltd

<b>DATE</b> 07/07/2015	<b>SURVEYED</b> NHV
<b>SCALE</b> 1 : 1000 (A4)	<b>DRAWN</b> BD15170
<b>LEVEL DATUM</b> A.H.D	<b>CHECKED</b> NHV

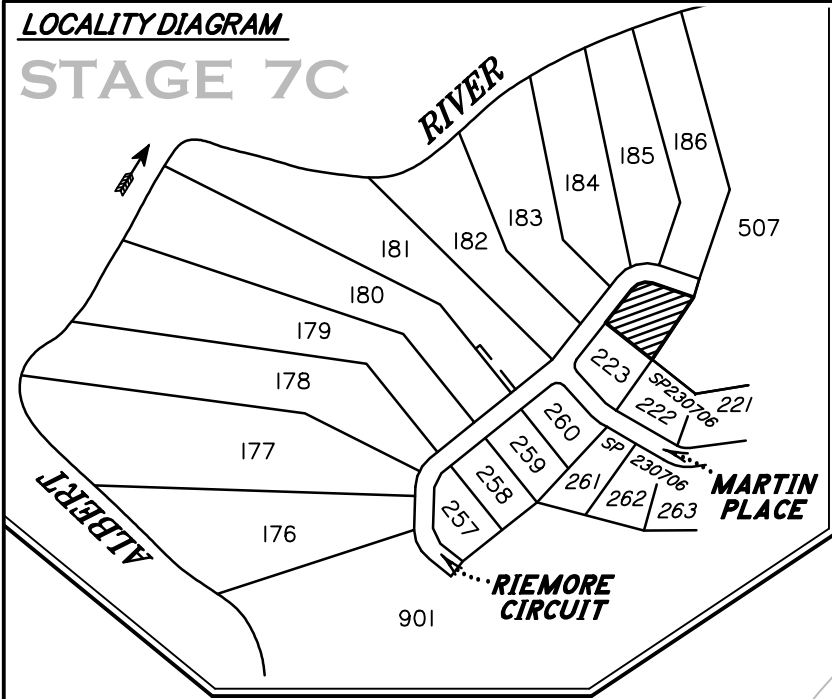
**N H Volker & Co Pty Ltd**  
 Consulting Surveyors  
 Land Development Consultants

PO Box 411, Beenleigh 4207  
 Phone: (07) 5543 8489  
 e-mail: nvolker@bigpond.net.au

**DWG NO: RIEMORE-ST7C-DP 223**

**LOCALITY DIAGRAM**

**STAGE 7C**

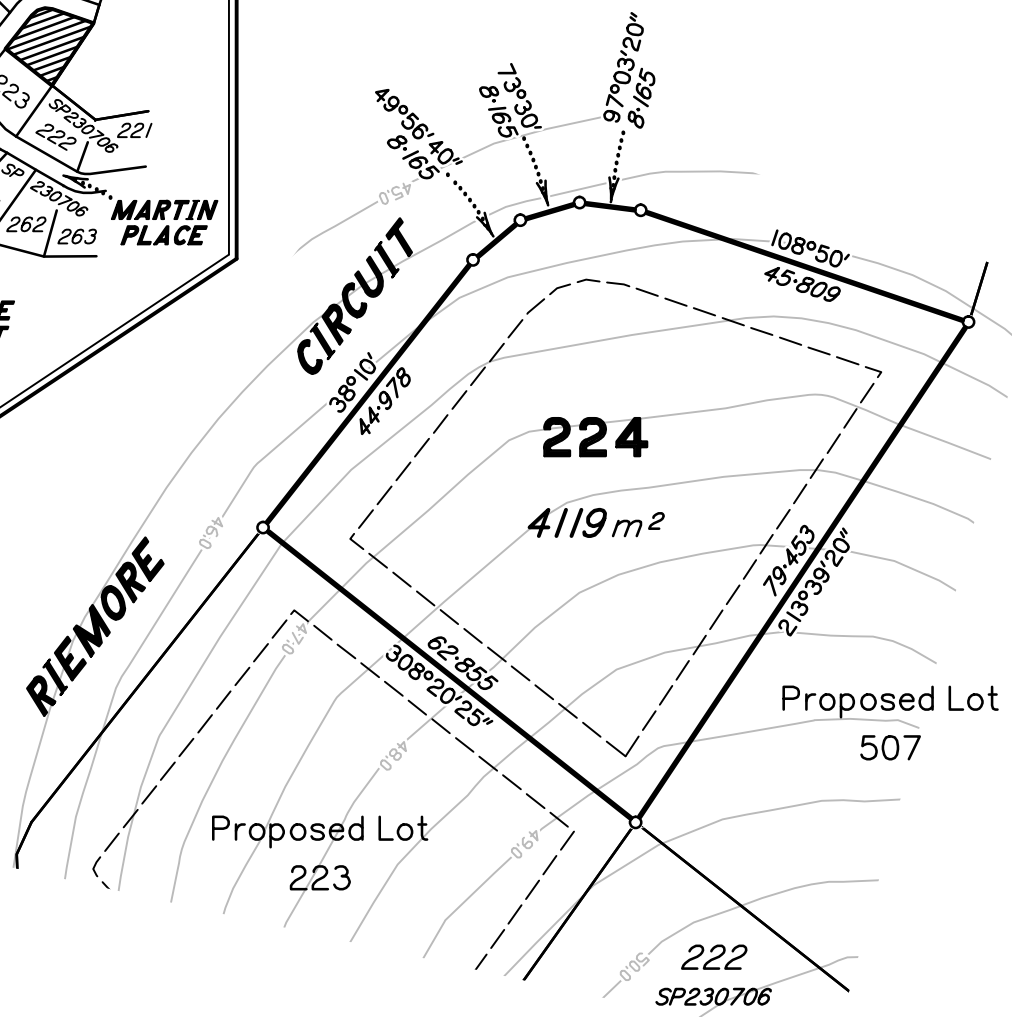


**LEGEND**

— s —	SEWER
— s —┘	SEWER HOUSE CONNECTION
●	SEWER MANHOLE
— SW —	STORMWATER
○	STORMWATER MANHOLE
⌒	STORMWATER GULLYTRAP
— RW —	ROOFWATER
— W —	WATER
⊠	WATER SERVICE
— W —┘	WATER END CAP
— C —	WATER CONDUIT
⊠	FIRE HYDRANT
▬▬▬	FLOODLINE
— UE —	UNDERGROUND ELECTRICITY
⊠	ELECTRICAL PILLAR
— T —	TELECOMMUNICATIONS
⊠	TELECOMMUNICATIONS PIT
⊙	STREET LIGHT
▬▬▬	KERB & CHANNEL
▬▬▬	ROAD CENTRELINE
▬▬▬	FOOTPATH
▬▬▬	BUILDING ENVELOPE
▬▬▬	DRIVEWAY
▬▬▬	CONTOURS DESIGN
▬▬▬	CONTOURS



Scale 1:1000 (at A4) (NB: using "Fit to Paper" option when printing may distort scale)



**DISCLOSURE PLAN**

For Lot **224** (on SP230708)  
**RIEMORE CIRCUIT**  
**TAMBORINE -RIEMORE-** (Stage 7C)  
**QLD**

Described as Part of Lot 9 on SP227072,  
 Lot 506 on SP230704 and Lot 708 on SP230706.

Parish of TAMBORINE, County of Ward.  
 Local Authority: SCENIC RIM R.C.

MAP REF: 9542-42322

**NOTES:**

Areas and Dimensions are subject to plan registration.  
 Proposed surface information is derived from digital  
 data provided by REF:

**AUTHORISATION:**

Neville Henry VOLKER Date:  
 Cadastral Surveyor: N H Volker & Co Pty Ltd

<b>DATE</b> 07/07/2015	<b>SURVEYED</b> NHV
<b>SCALE</b> 1 : 1000 (A4)	<b>DRAWN</b> BD15170
<b>LEVEL DATUM</b> A.H.D	<b>CHECKED</b> NHV

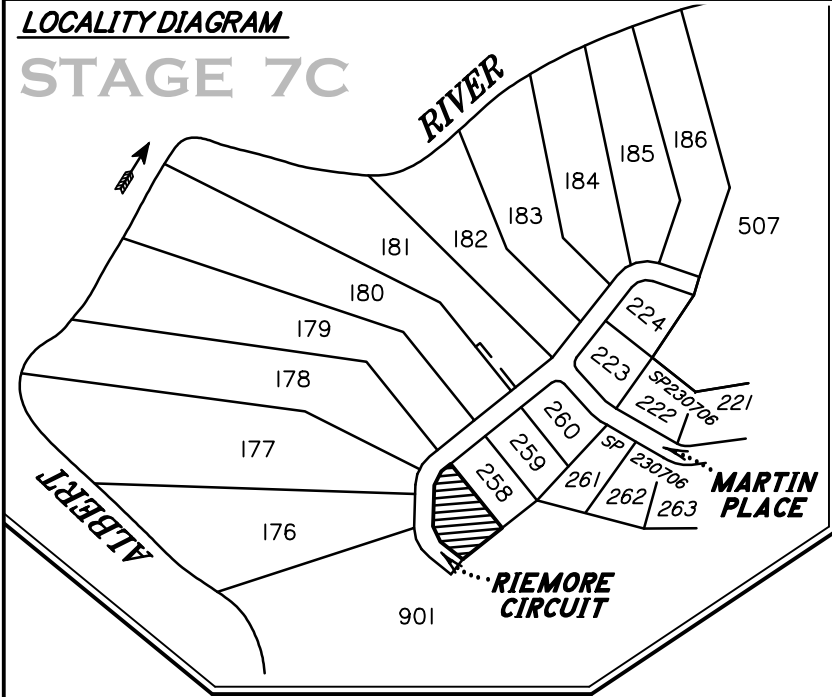
**N H Volker & Co Pty Ltd**  
 Consulting Surveyors  
 Land Development Consultants

PO Box 411, Beenleigh 4207  
 Phone: (07) 5543 8489  
 e-mail: nvolker@bigpond.net.au

**DWG NO: RIEMORE-ST7C-DP 224**

**LOCALITY DIAGRAM**

**STAGE 7C**

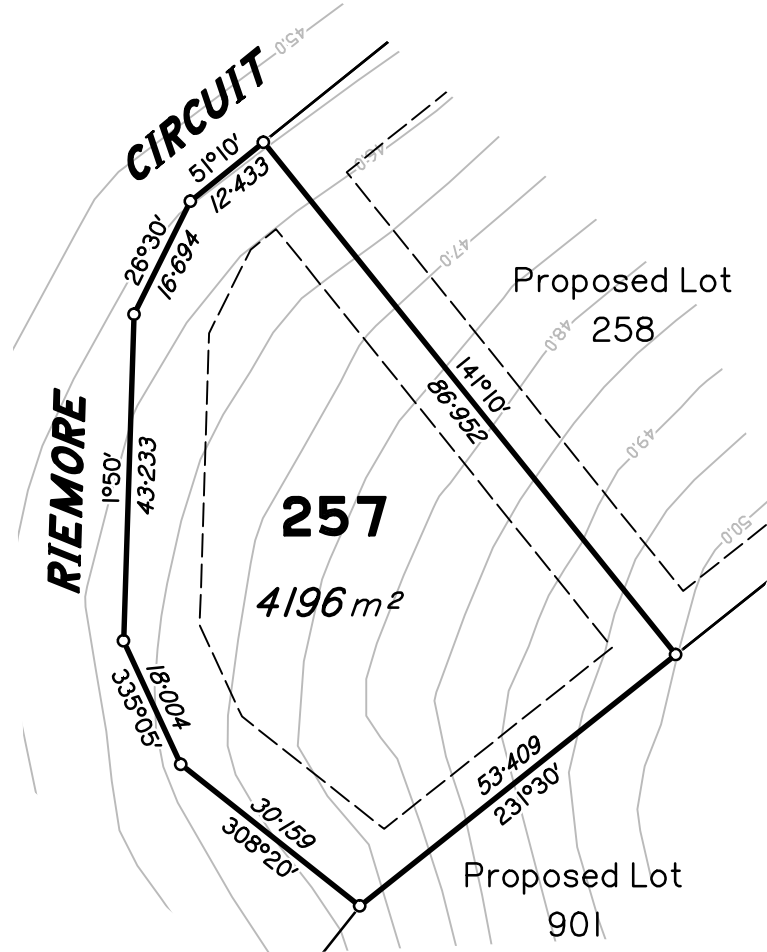
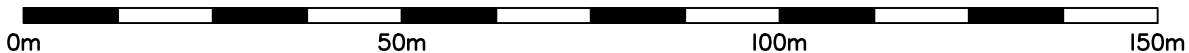


**LEGEND**

- s — SEWER
- s —┘ SEWER HOUSE CONNECTION
- SEWER MANHOLE
- SW — STORMWATER
- STORMWATER MANHOLE
- SW —┘ STORMWATER GULLYTRAP
- RW — ROOFWATER
- W — WATER
- ⊠ WATER SERVICE
- W —┘ WATER END CAP
- C — WATER CONDUIT
- ⊠ FIRE HYDRANT
- ▬ FLOODLINE
- UE — UNDERGROUND ELECTRICITY
- ⊠ ELECTRICAL PILLAR
- T — TELECOMMUNICATIONS
- ⊠ TELECOMMUNICATIONS PIT
- \* STREET LIGHT
- ▬ KERB & CHANNEL
- ▬ ROAD CENTRELINE
- ▬ FOOTPATH
- ▬ BUILDING ENVELOPE
- ▬ DRIVEWAY
- ▬ CONTOURS DESIGN
- ▬ CONTOURS



Scale 1:1000 (at A4) (NB: using "Fit to Paper" option when printing may distort scale)



**DISCLOSURE PLAN**

For Lot **257** (on SP230708)  
**RIEMORE CIRCUIT**  
**TAMBORINE -RIEMORE- (Stage 7C)**  
**QLD**

Described as Part of Lot 9 on SP227072,  
 Lot 506 on SP230704 and Lot 708 on SP230706.

Parish of TAMBORINE, County of Ward.  
 Local Authority: SCENIC RIM R.C.

MAP REF: 9542-42322

**NOTES:**

Areas and Dimensions are subject to plan registration.  
 Proposed surface information is derived from digital data provided by REF:

**AUTHORISATION:**

Neville Henry VOLKER Date:  
 Cadastral Surveyor: N H Volker & Co Pty Ltd

<b>DATE</b> 07/07/2015	<b>SURVEYED</b> NHV
<b>SCALE</b> 1 : 1000 (A4)	<b>DRAWN</b> BD15170
<b>LEVEL DATUM</b> A.H.D	<b>CHECKED</b> NHV

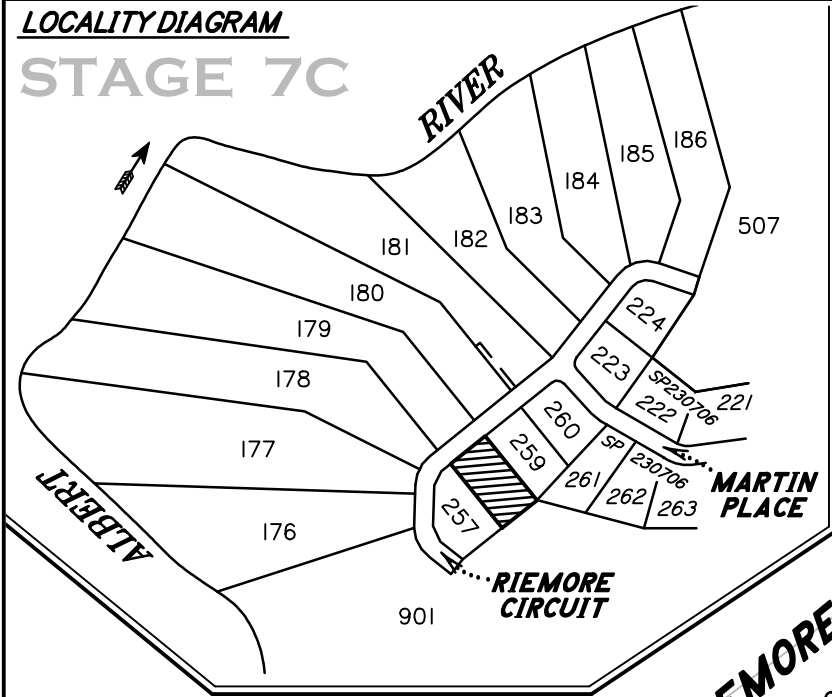
**N H Volker & Co Pty Ltd**  
 Consulting Surveyors  
 Land Development Consultants

PO Box 411, Beenleigh 4207  
 Phone: (07) 5543 8489  
 e-mail: nvolker@bigpond.net.au

**DWG NO: RIEMORE-ST7C-DP 257**

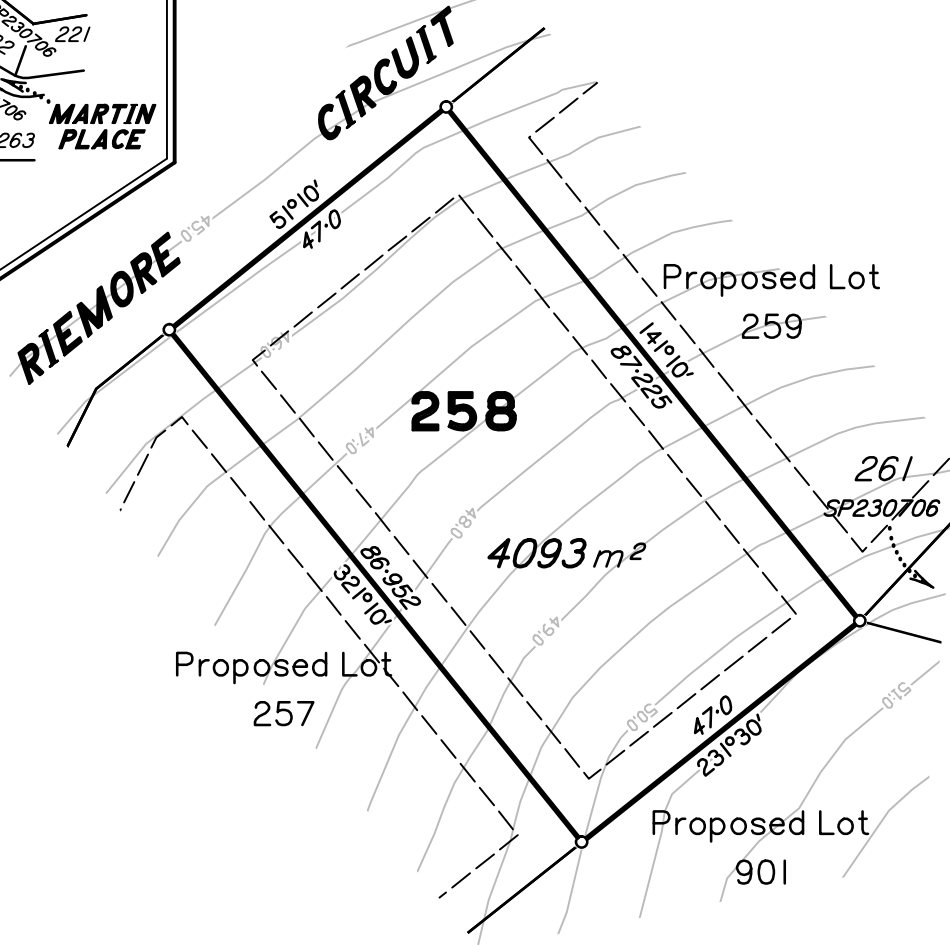
**LOCALITY DIAGRAM**

**STAGE 7C**



**LEGEND**

— s —	SEWER
— s —┘	SEWER HOUSE CONNECTION
●	SEWER MANHOLE
— SW —	STORMWATER
○	STORMWATER MANHOLE
—	STORMWATER GULLYTRAP
— RW —	ROOFWATER
— W —	WATER
⊠	WATER SERVICE
— W —┘	WATER END CAP
— C —	WATER CONDUIT
⊠	FIRE HYDRANT
▬▬▬	FLOODLINE
— UE —	UNDERGROUND ELECTRICITY
⊠	ELECTRICAL PILLAR
— T —	TELECOMMUNICATIONS
⊠	TELECOMMUNICATIONS PIT
⊙	STREET LIGHT
▬▬▬	KERB & CHANNEL
▬▬▬	ROAD CENTRELINE
▬▬▬	FOOTPATH
▬▬▬	BUILDING ENVELOPE
▬▬▬	DRIVEWAY
▬▬▬	CONTOURS DESIGN
▬▬▬	CONTOURS



Scale 1:1000 (at A4) (NB: using "Fit to Paper" option when printing may distort scale)

0m 50m 100m 150m

**DISCLOSURE PLAN**

For Lot **258** (on SP230708)  
**RIEMORE CIRCUIT**  
**TAMBORINE -RIEMORE-** (Stage 7C)  
**QLD**

Described as Part of Lot 9 on SP227072,  
 Lot 506 on SP230704 and Lot 708 on SP230706.

Parish of TAMBORINE, County of Ward.  
 Local Authority: SCENIC RIM R.C.

MAP REF: 9542-42322

**NOTES:**

Areas and Dimensions are subject to plan registration.  
 Proposed surface information is derived from digital data provided by REF:

**AUTHORISATION:**

Neville Henry VOLKER Date:  
 Cadastral Surveyor: N H Volker & Co Pty Ltd

<b>DATE</b> 07/07/2015	<b>SURVEYED</b> NHV
<b>SCALE</b> 1 : 1000 (A4)	<b>DRAWN</b> BD15170
<b>LEVEL DATUM</b> A.H.D	<b>CHECKED</b> NHV

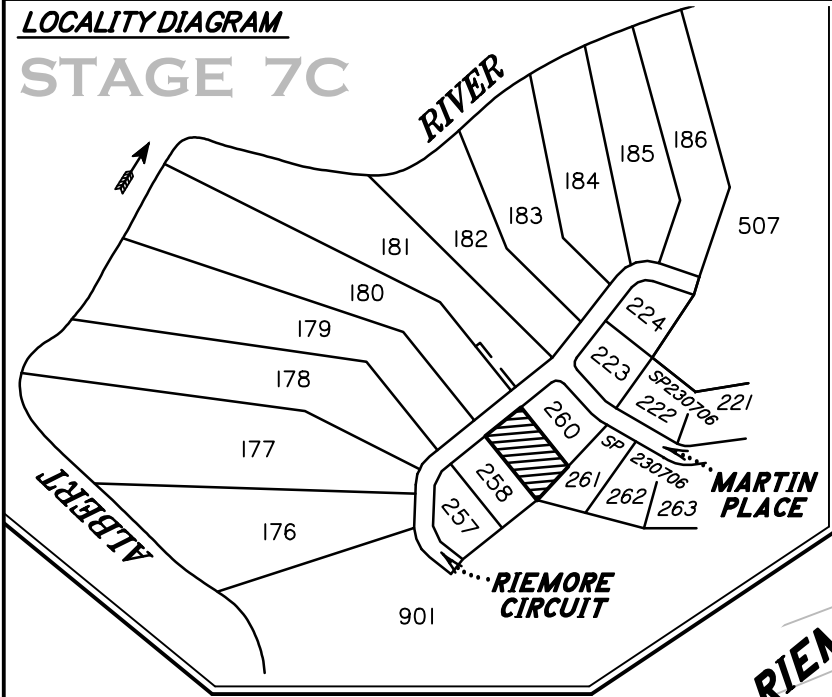
**N H Volker & Co Pty Ltd**  
 Consulting Surveyors  
 Land Development Consultants

PO Box 411, Beenleigh 4207  
 Phone: (07) 5543 8489  
 e-mail: nvolker@bigpond.net.au

**DWG NO: RIEMORE-ST7C-DP 258**

**LOCALITY DIAGRAM**

**STAGE 7C**

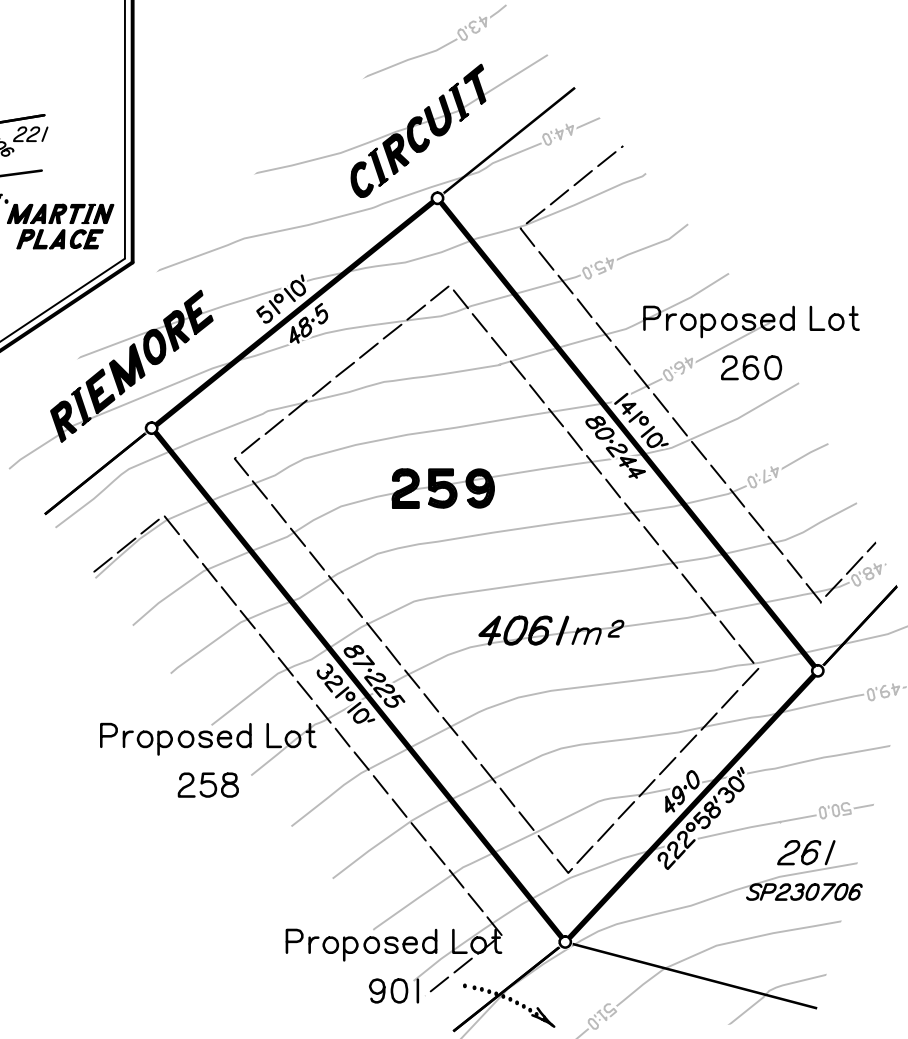


**LEGEND**

- s — SEWER
- s — SEWER HOUSE CONNECTION
- SEWER MANHOLE
- SW — STORMWATER
- STORMWATER MANHOLE
- SW — STORMWATER GULLYTRAP
- RW — ROOFWATER
- W — WATER
- ☒ WATER SERVICE
- W — WATER END CAP
- c — WATER CONDUIT
- ⊞ FIRE HYDRANT
- ▬ FLOODLINE
- UE — UNDERGROUND ELECTRICITY
- ⊞ ELECTRICAL PILLAR
- T — TELECOMMUNICATIONS
- ⊞ TELECOMMUNICATIONS PIT
- ⊙ STREET LIGHT
- ▬ KERB & CHANNEL
- ▬ ROAD CENTRELINE
- ▬ FOOTPATH
- ▬ BUILDING ENVELOPE
- ▬ DRIVEWAY
- CONTOURS DESIGN
- ▬ CONTOURS



Scale 1:1000 (at A4) (NB: using "Fit to Paper" option when printing may distort scale)



**DISCLOSURE PLAN**

For Lot **259** (on SP230708)  
**RIEMORE CIRCUIT**  
**TAMBORINE -RIEMORE-** (Stage 7C)  
**QLD**

Described as Part of Lot 9 on SP227072,  
 Lot 506 on SP230704 and Lot 708 on SP230706.

Parish of TAMBORINE, County of Ward.  
 Local Authority: SCENIC RIM R.C.

MAP REF: 9542-42322

**NOTES:**

Areas and Dimensions are subject to plan registration.  
 Proposed surface information is derived from digital data provided by REF:

**AUTHORISATION:**

Neville Henry VOLKER Date:  
 Cadastral Surveyor: N H Volker & Co Pty Ltd

<b>DATE</b> 07/07/2015	<b>SURVEYED</b> NHV
<b>SCALE</b> 1 : 1000 (A4)	<b>DRAWN</b> BD15170
<b>LEVEL DATUM</b> A.H.D	<b>CHECKED</b> NHV

**N H Volker & Co Pty Ltd**  
 Consulting Surveyors  
 Land Development Consultants

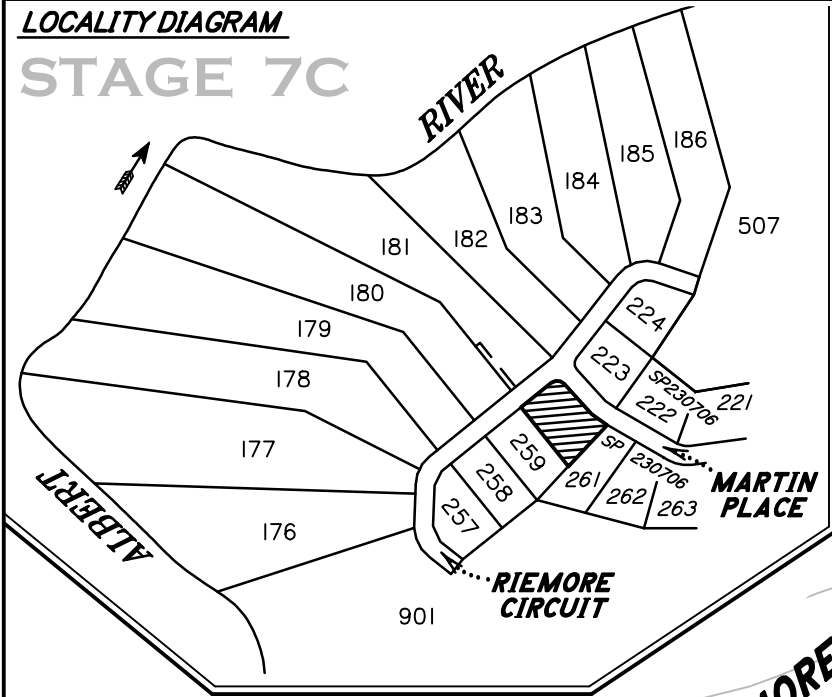
PO Box 411, Beenleigh 4207  
 Phone: (07) 5543 8489  
 e-mail: nvolker@bigpond.net.au

**DWG NO: RIEMORE-ST7C-DP 259**



**LOCALITY DIAGRAM**

**STAGE 7C**

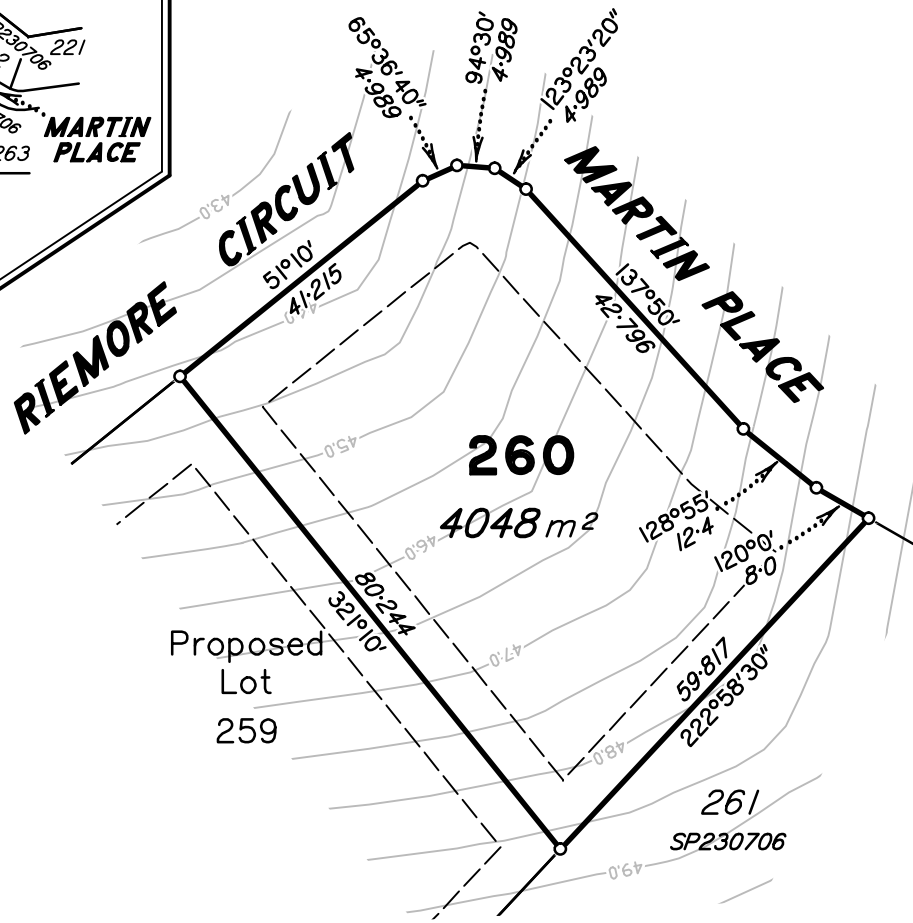


**LEGEND**

- s — SEWER
- s — SEWER HOUSE CONNECTION
- SEWER MANHOLE
- SW — STORMWATER
- STORMWATER MANHOLE
- SW — STORMWATER GULLYTRAP
- RW — ROOFWATER
- W — WATER
- ☒ WATER SERVICE
- W — ] WATER END CAP
- c — WATER CONDUIT
- ⊞ FIRE HYDRANT
- ▬ FLOODLINE
- UE — UNDERGROUND ELECTRICITY
- ⊞ ELECTRICAL PILLAR
- T — TELECOMMUNICATIONS
- ⊞ TELECOMMUNICATIONS PIT
- ⊙ STREET LIGHT
- ▬ KERB & CHANNEL
- ▬ ROAD CENTRELINE
- ▬ FOOTPATH
- ▬ BUILDING ENVELOPE
- ▬ DRIVEWAY
- ▬ CONTOURS DESIGN
- ▬ CONTOURS



Scale 1:1000 (at A4) (NB: using "Fit to Paper" option when printing may distort scale)



**DISCLOSURE PLAN**

For Lot **260** (on SP230708)  
**RIEMORE CIRCUIT**  
**TAMBORINE -RIEMORE-** (Stage 7C)  
**QLD**

Described as Part of Lot 9 on SP227072,  
 Lot 506 on SP230704 and Lot 708 on SP230706.

Parish of TAMBORINE, County of Ward.  
 Local Authority: SCENIC RIM R.C.

MAP REF: 9542-42322

**NOTES:**

Areas and Dimensions are subject to plan registration.  
 Proposed surface information is derived from digital  
 data provided by REF:

**AUTHORISATION:**

Neville Henry VOLKER Date:  
 Cadastral Surveyor: N H Volker & Co Pty Ltd

<b>DATE</b> 07/07/2015	<b>SURVEYED</b> NHV
<b>SCALE</b> 1 : 1000 (A4)	<b>DRAWN</b> BD15170
<b>LEVEL DATUM</b> A.H.D	<b>CHECKED</b> NHV

**N H Volker & Co Pty Ltd**  
 Consulting Surveyors  
 Land Development Consultants

PO Box 411, Beenleigh 4207  
 Phone: (07) 5543 8489  
 e-mail: nvolker@bigpond.net.au

**DWG NO: RIEMORE-ST7C-DP 260**